

Rural Development Priority 6 (P6): Promote social inclusion, poverty reduction and economic development in rural areas

Situation at the end of 2022

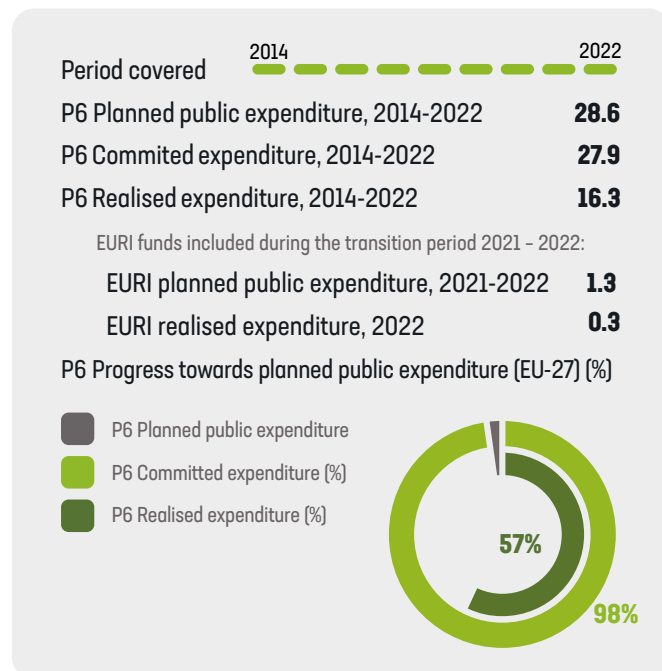
This factsheet contains monitoring data aggregated at EU level (EU-27), providing a comprehensive overview of the state of play in the implementation of the rural development Priority 6 (P6) 'Promote social inclusion, poverty reduction and economic development in rural areas'. In particular, Section 1 presents financial expenditures¹ including the additional funds introduced from the European Recovery Instrument (EURI). The data are aggregated at EU level and broken down by Member State (MS), covering the period between 2014 and end 2022. Section 2 presents the progress realised towards the EU common target indicators linked to P6.

1. Financial expenditure (RD Priority 6)

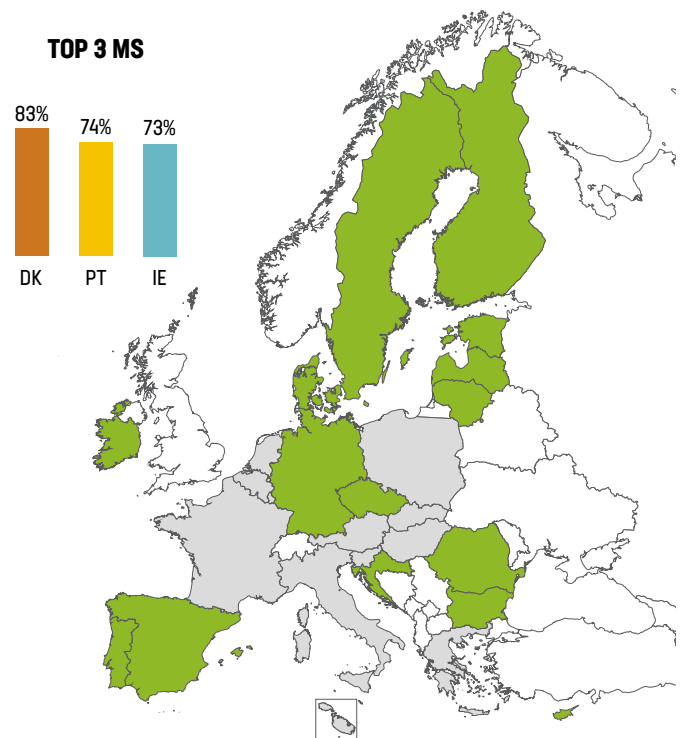
This section presents information on the progress made on public financial expenditure until December 2022, aggregated at EU level (EU-27) and broken down by Member State. The information includes planned, committed and realised expenditures, and the progress made towards achieving the planned public expenditures under P6.

1.1 P6 total public expenditure: planned, committed and realised

Table 1: Overview of financial expenditure for P6 at EU level (EU-27) - Billion EUR.



Map 1: Member States with progress towards their P6 planned public expenditures above the EU average of 57% (based on realised expenditure).



¹ Financial expenditure includes:

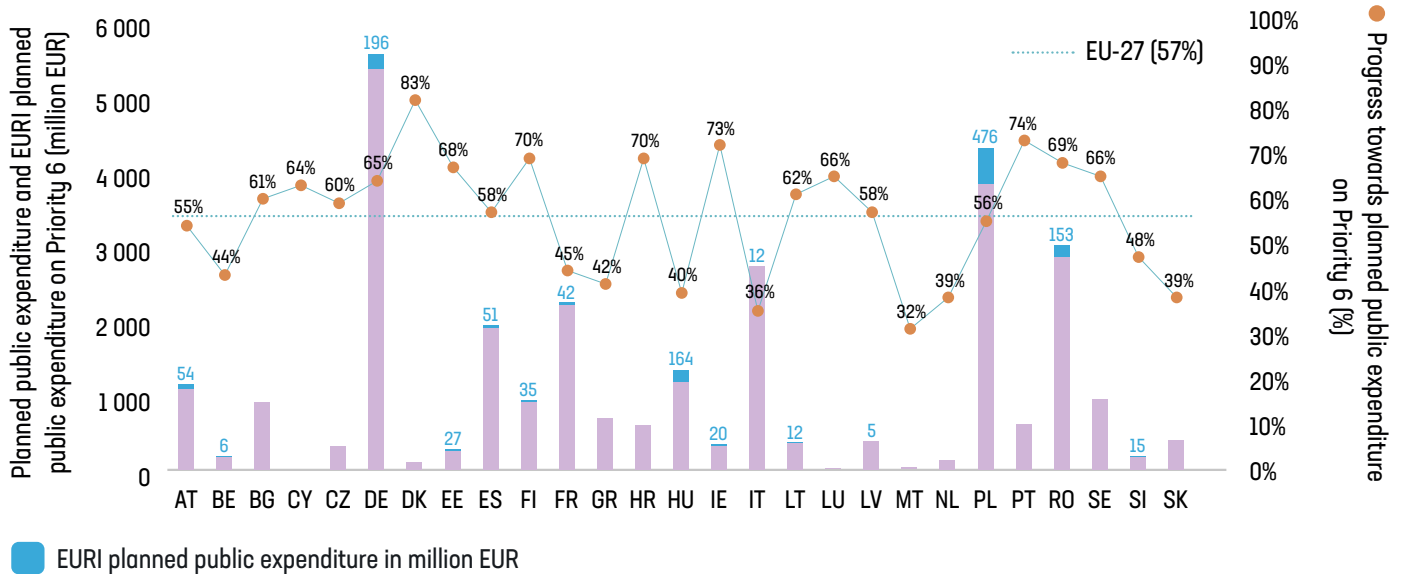
- i) **Committed expenditures** relate to all those applications that have been approved by the Managing Authorities/Paying Agencies
- ii) **Realised expenditures** relate to all those operations that have been completed and the last payment made.



1.2 Progress towards the planned expenditure of priority 6 (%), by Member State

The following graph illustrates the planned public expenditure on P6 (purple bars), and the progress made toward achieving it (orange dots based on realised expenditure) by Member State.

Graph 1: P6 Planned Public Expenditure (million EUR) and progress (%)



2. Main Achievements - Target indicators (1)

The following table provides information on the EU Common Target indicators related to P6 by Member State. It includes information on planned targets and the progress made to achieve them at the end of 2022 (based on realised expenditure²). Data is provided by Member State and aggregated at EU-level.

Not implemented in the MS
 Progress towards the target
 Target achieved (100%)
 Target over-achieved (more than 100%)

Target	T20: Jobs created in supported projects (focus area 6A)			T21: Percentage (%) of rural population covered by local development strategies (focus area 6B)		
	Planned Target 2025	Target Value 2022 (Realised)	Progress achieved (Realised)	Planned Target 2025	Target Value 2022 (Realised)	Progress achieved (Realised)
AT	410	534	130%	83.50 %	84.82 %	102%
BE	20	4	20%	49.42 %	82.64 %	167%
BG	3 500	2 094	60%	22.91 %	27.53 %	120%
CY	100	53	53%	11.55 %	12.32 %	107%
CZ	660	507	77%	66.51 %	79.48 %	119%
DE	454	446	98%	56.44 %	63.40 %	112%
DK				50.87 %	54.11 %	106%
EE	280	705	252%	60.42 %	63.83 %	106%
ES	2 858	3 998	140%	53.59 %	52.91 %	99%
FI	4 500	6 602	147%	47.47 %	70.68 %	149%
FR	873	685	78%	47.32 %	53.94 %	114%
GR	675	683	101%	66.34 %	68.83 %	104%
HR	1 200	1 107	92%	66.62 %	67.92 %	102%
HU	4 000	866	22%	68.03 %	66.00 %	97%
IE				82.02 %	82.02 %	100%
IT	1 921	808	42%	49.05 %	50.81 %	104%
LT	2 985	2 976	99.7%	100.0 %	102.28 %	102.3%
LU				36.20 %	34.46 %	95%
LV	400	921	230%	94.31 %	94.31 %	100%
MT	28	0	0%	99.97 %	105.38 %	105%
NL				64.86 %	73.33 %	113%
PL	25 654	3 587	14%	72.65 %	72.65 %	100%
PT				74.71 %	95.29 %	128%
RO	24 474	7 077	29%	100.0 %	90.81 %	91%
SE	975	801	82%	57.37 %	57.37 %	100%
SI	350	239	68%	65.57 %	69.00 %	105%
SK	1 100	187	17%	31.26 %	59.14 %	189%
EU-27 (%)³	77 417	34 880	45%	57.94 %	62.59 %	108%

Source: Annual Implementation Reports 2022 (AIR).

² Realised: The calculation of the target value is based on all those operations that have been completed and the last payment made.

³ Target values (%) at EU level are calculated on the basis of the RDPs that activated the specific Focus Area.

2. Main Achievements - Target indicators (2)

The following table provides information on the EU Common Target indicators related to P6 by Member State. It includes information on planned targets and the progress made to achieve them at the end of 2022 (based on realised expenditure⁴). Data is provided by Member State and aggregated at EU-level.

Not implemented in the MS
 Progress towards the target
 Target achieved (100%)
 Target over-achieved (more than 100%)

Target	T22: Percentage (%) of rural population benefiting from improved services/infrastructures (focus area 6B)			T23: Jobs created in supported projects (LEADER) (focus area 6B)		
	Planned Target 2025	Target Value 2022 (Realised)	Progress achieved (Realised)	Planned Target 2025	Target Value 2022 (Realised)	Progress achieved (Realised)
AT	65.35 %	80.86 %	124%	2 300	2 587	112%
BE	67.85 %	55.81 %	82%	194	419	216%
BG	33.36 %	70.34 %	211%	600	216	36%
CY	46.19 %	5.09%	11%	20	20	100%
CZ				750	1 158	154%
DE	23.83 %	35.31 %	148%	1 839	2 655	144%
DK	5.06 %	5.61 %	111%	1 584	1 232	78%
EE				1 700	1 719	101%
ES	21.04 %	16.75 %	80%	9 094	9 109	100.2%
FI	47.38 %	92.96 %	196%	2 505	3 783	151%
FR	16.77 %	16.69 %	99%	2 848	2 170	76%
GR	1.24 %	1.94 %	156%	2 150	868	40%
HR	41.64 %	40.55 %	97%	200	160	80%
HU	68.03 %	61.53 %	90%	500	843	169%
IE				3 100	2 228	72%
IT	5.10 %	5.37 %	105%	3 949	2 540	64%
LT	14.26 %	33.13 %	232%	1 104	1 369	124%
LU				25	31	122%
LV	1.98 %	3.59 %	182%	800	512	64%
MT				10	2.5	25%
NL				250	434	174%
PL	23.50 %	15.89 %	68%	14 420	14 655	102%
PT	4.03 %	6.01 %	149%	1 442	3 419	237%
RO	26.63 %	42.86 %	161%	2 725	4 053	149%
SE	35.79 %	32.17 %	90%	930	921	99%
SI				85	88	103%
SK	4.46 %	9.14 %	205%	700	2	0.3%
EU-27 (%)⁵	20.38 %	24.09 %	118%	55 824	57 282	103%

Source: Annual Implementation Reports 2022 (AIR).

⁴ Realised: The calculation of the target value is based on all those operations that have been completed and the last payment made.

⁵ Target values (%) at EU level are calculated on the basis of the RDPs that activated the specific Focus Area.

2. Main Achievements - Target indicators (3)

The following table provides information on the EU Common Target indicators related to P6 by Member State. It includes information on planned targets and the progress made to achieve them at the end of 2022 (based on realised expenditure⁶). Data is provided by Member State and aggregated at EU-level.

Not implemented in the MS
 Progress towards the target
 Target achieved (100%)
 Target over-achieved (more than 100%)

Target	T24: Percentage (%) of rural population benefiting from new or improved services/infrastructures (ICT) (focus area 6C)		
	Planned Target 2025	Target Value 2022 (Realised)	Progress achieved (Realised)
AT	1.85 %	1.18 %	64%
BE			
BG	1.64 %	0 %	0%
CY	46.19 %	10.96 %	24%
CZ			
DE	6.64 %	3.78 %	57%
DK			
EE			
ES	2.28 %	1.88 %	82%
FI	49.85 %	32.17 %	65%
FR	0.26 %	0.17 %	65%
GR	9.95 %	0.80 %	8%
HR			
HU			
IE			
IT	12.70 %	5.84 %	46%
LT	1.90 %	4.09 %	215%
LU			
LV			
MT			
NL			
PL			
PT			
RO			
SE	4.86 %	2.41 %	50%
SI	0.87 %	0 %	0%
SK	1.09 %	0 %	0%
EU-27 (%)⁷	4.41 %	2.24 %	51%

Source: Annual Implementation Reports 2022 (AIR).

⁶ Realised: The calculation of the target value is based on all those operations that have been completed and the last payment made.

⁷ Target values (%) at EU level are calculated on the basis of the RDPs that activated the specific Focus Area.

3. Additional information

Rural Development Regulation 2014-2020

Regulation (EU) N° 1305/2013 of the European Parliament and of the Council on support for rural development by the European Agricultural Fund for Rural Development (EAFRD) [\[PDF\]](#)

RDP Summaries

Developed by the CAP Implementation Contact Point, these summarise the relevant information of all the RDPs approved [\[here\]](#)

RDP Priority and Focus Area Summaries

Developed by the CAP Implementation Contact Point, these summarise the relevant information of all RDP Priorities and Focus Areas [\[here\]](#)

Source of information: All data presented in this factsheet is collected from the Annual Implementation Reports (AIRs) submitted by Member States to the Commission by the end of June 2023. Data was retrieved in January 2024 from the 2022 AIRs. Exceptionally, the EURI planned expenditure is based on the latest adopted RDPs on 15 March 2024, while the EURI realised expenditure is based on declarations of expenditure up until Q4 2023.

In this factsheet, public expenditure means total public expenditure (= EAFRD + Member States matching funds + any national top-ups). Due to rounding, there may be small discrepancies between some figures presented. Data illustrated cover the programme implementation period between 2014-2022.

Disclaimer: This factsheet aims to provide a user-friendly summary of the progress made in the implementation of the rural development policy. While based on monitoring data submitted by Member States to the Commission, the analysis was undertaken by the CAP Implementation Contact Point and the information presented should not be considered as official data from the European Commission.