

# Rural Development Priority 5 (P5): Promote resource efficiency and support the shift towards a low carbon and climate resilient economy in agriculture, food and forestry sectors

## Situation at the end of 2022

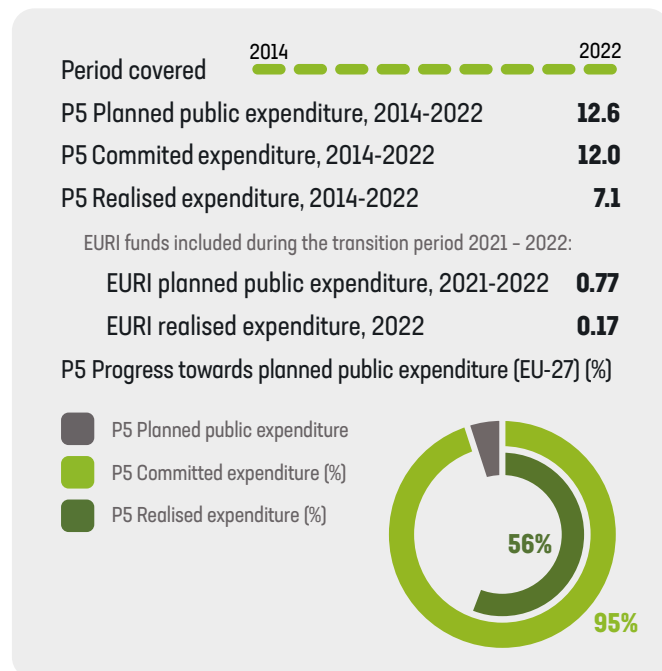
This factsheet contains monitoring data aggregated at EU level (EU-27), providing a comprehensive overview of the state of play in the implementation of the rural development Priority 5 (P5) 'Promote resource efficiency and support the shift towards a low carbon and climate resilient economy in agriculture, food and forestry sectors'. In particular, Section 1 presents financial expenditure<sup>1</sup> including the additional funds introduced from the European Recovery Instrument (EURI). The data are aggregated at EU level and broken down by Member State (MS), covering the period between 2014 and end 2022. Section 2 presents the progress realised towards the EU common target indicators linked to P5.

### 1. Financial expenditure (RD Priority 5)

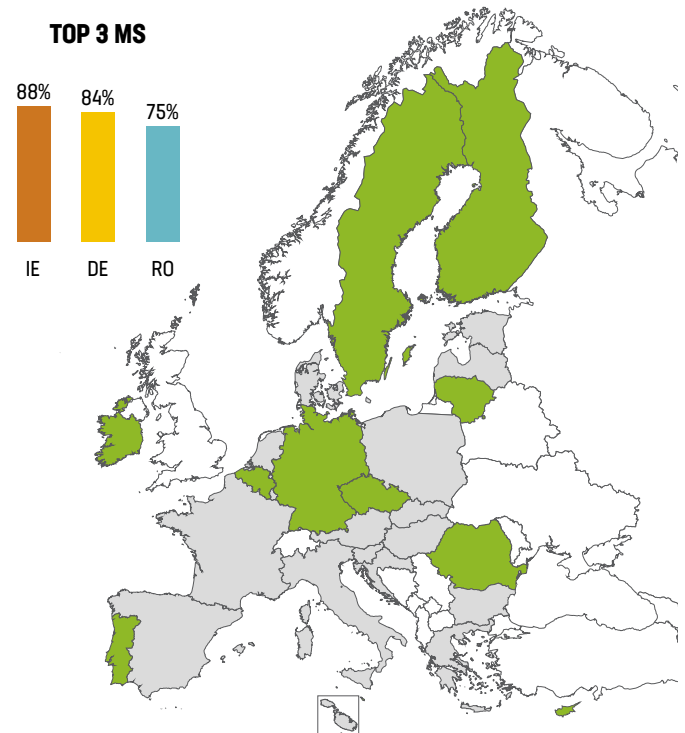
This section presents information on the progress made on public financial expenditure until December 2022, aggregated at EU level (EU-27) and broken down by Member State. The information includes planned, committed and realised expenditures, and the progress made towards achieving the planned public expenditures under P5.

#### 1.1 P5 total public expenditure: planned, committed and realised

**Table 1:** Overview of financial expenditure for P5 at EU level (EU-27) - Billion EUR.



**Map 1:** Member States with progress towards their P5 planned public expenditures above the EU average of 56% (based on realised expenditure).



<sup>1</sup> Financial expenditure includes:

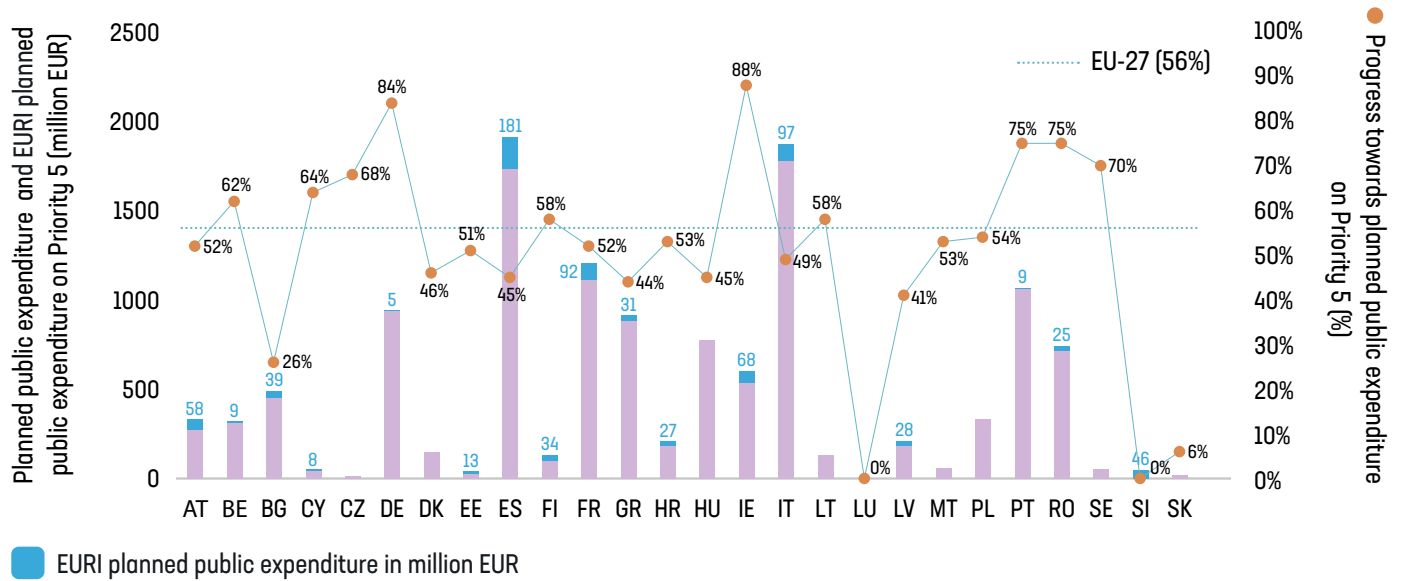
- i) **Committed expenditures** relate to all those applications that have been approved by the Managing Authorities/Paying Agencies and
- ii) **Realised expenditures** relate to all those operations that have been completed and the last payment made.



## 1.2 Progress towards the planned expenditure of priority 5 (%), by Member State

The following graph illustrates the planned public expenditure on P5 (purple bars), and the progress made toward achieving it (orange dots based on realised expenditure) by Member State.

**Graph 1: P5 Planned Public Expenditure (million EUR) and progress (%)**



## 2. Main Achievements – Target indicators (1)

The following table provides information on the EU Common Target indicators related to P5 by Member State. It includes information on planned targets and the progress made to achieve them at the end of 2022 (based on realised expenditure<sup>2</sup>). Data is provided by Member State and aggregated at EU-level.

Not implemented in the MS
  Progress towards the target
  Target achieved (100% or more)
  Target over-achieved (more than 100%)

Target	T14: Percentage (%) of irrigated land switching to more efficient irrigation system (focus area 5A)			T15: Total investment for energy efficiency (€) (focus area 5B)		
	Planned Target 2025	Target Value 2022 (Realised)	Progress achieved (Realised)	Planned Target 2025	Target Value 2022 (Realised)	Progress achieved (Realised)
AT	78.55 %	54.51 %	69%			
BE				298 944 797	241 848 893	81%
BG	38.72 %	0 %	0%	419 024 651	183 167 962	44%
CY	9.17 %	6.49 %	71%			
CZ						
DE	0.54 %	0 %	0%	607 269 377	415 737 643	68%
DK				52 203 971	31 494 607	60%
EE				57 500 000	33 836 250	59%
ES	11.64 %	9.88 %	85%	346 144 767	152 870 912	44%
FI	2.38 %	0.66 %	28%			
FR	7.09 %	6.55 %	92%	468 607 427	187 707 985	40%
GR	5.56 %	7.80 %	140%	27 796 785	34 258 301	123%
HR						
HU	11.41 %	18.09 %	159%	888 306 248	246 248 406	28%
IE				104 000 000	24 946 765	24%
IT	19.78 %	5.05 %	26%	26 171 918	12 203 283	47%
LT						
LU						
LV				138 127 150	27 081 094	20%
MT	12.51 %	2.78 %	22%	759 597	0	0%
NL						
PL						
PT	21.37 %	51.63 %	242%	155 336 971	87 390 077	56%
RO <sup>3</sup>	294.28 %	347.27 %	118%			
SE						
SI	60.48 %	0 %	0%			
SK						
<b>EU-27 (%)<sup>4</sup></b>	<b>15.74 %</b>	<b>13.52 %</b>	<b>86%</b>	<b>3 590 193 660</b>	<b>1 678 792 177</b>	<b>47%</b>

Source: Annual Implementation Reports 2022 (AIR).

<sup>2</sup> Realised: The calculation of the target value is based on all those operations that have been completed and the last payment made.

<sup>3</sup> Romania has large-scale irrigation infrastructure, but part is poorly functional and not actually used (irrigated), hence this statistical anomaly.

<sup>4</sup> Target values (%) at EU level are calculated on the basis of the RDPs that activated the specific Focus Area.

## 2. Main Achievements - Target indicators (2)

The following table provides information on the EU Common Target indicators related to P5 by Member State. It includes information on planned targets and the progress made to achieve them at the end of 2021 (based on realised expenditure<sup>5</sup>). Data is provided by Member State and aggregated at EU-level.

Not implemented in the MS
  Progress towards the target
  Target achieved (100% or more)
  Target over-achieved (more than 100%)

Target	T16: Total investment in renewable energy production (€) (focus area 5C)			T17: Percentage (%) of LU concerned by investments in livestock management in view of reducing GHG and/or ammonia emissions (focus area 5D)		
	Planned Target 2025	Target Value 2022 (Realised)	Progress achieved (Realised)	Planned Target 2025	Target Value 2022 (Realised)	Progress achieved (Realised)
AT	710 055 515	403 332 986	57%			
BE	76 000 000	19 259 488	25%	5.32 %	5.25 %	99%
BG	154 266 117	2 658 229	2%	0.174 %	0.087 %	50%
CY	45 000 000	42 568 584	95%	7.47 %	1.67 %	22%
CZ	6 545 115	2 251 532	34%			
DE	28 528 892	9 636 078	34%			
DK	60 362 732	60 302 185	99.9%	3.88 %	2.66 %	68%
EE	24 500 000	18 900 496	77%			
ES	258 036 523	101 997 169	40%	0.908 %	0.503 %	55%
FI	136 000 000	78 002 641	57%	10.70 %	2.69 %	25%
FR	288 954 047	183 373 457	63%			
GR	78 380 866	12 056 173	15%	0.01 %	0 %	0%
HR	118 914 059	36 400 096	31%	9.31 %	12.93 %	139%
HU	58 029 703	59 149 922	102%	16.87 %	16.87 %	100%
IE				3.83 %	13.53 %	353%
IT	145 721 410	60 364 406	41%	4.90 %	4.14 %	85%
LT	20 260 872	2 637 288	13%			
LU				14.91 %	0 %	0%
LV	40 000 000	914 017	2.3%	11.17 %	7.18 %	64%
MT	3 038 387	15 706	0.5%	16.09 %	9.60 %	60%
NL						
PL	160 000 000	0	0%			
PT	88 040 355	49 869 283	57%	0.008 %	0.024 %	311%
RO	1 958 334	4 043 852	206%	2.94 %	2.89 %	98%
SE	63 072 200	45 561 086	72%	7.42 %	6.60 %	89%
SI				4.18 %	0.04 %	1.1%
SK	30 087 770	1 265 149	4%			
<b>EU-27 (%)<sup>6</sup></b>	<b>2 595 752 898</b>	<b>1 194 089 614</b>	<b>46%</b>	<b>1.91 %</b>	<b>2.09 %</b>	<b>110%</b>

Source: Annual Implementation Reports 2022 (AIR).

<sup>5</sup> Realised: The calculation of the target value is based on all those operations that have been completed and the last payment made.

<sup>6</sup> Target values (%) at EU level are calculated on the basis of the RDPs that activated the specific Focus Area.

## 2. Main Achievements - Target indicators (3)

The following table provides information on the EU Common Target indicators related to P5 by Member State. It includes information on planned targets and the progress made to achieve them at the end of 2021 (based on realised expenditure<sup>7</sup>). Data is provided by Member State and aggregated at EU-level.

Not implemented in the MS
  Progress towards the target
  Target achieved (100% or more)
  Target over-achieved (more than 100%)

Target	T18: Percentage (%) of agricultural land under management contracts targeting reduction of GHG and/or ammonia emissions (focus area 5D)			T19: Percentage (%) of agricultural and forest land under management contracts contributing to carbon sequestration and conservation (focus area 5E)		
	Planned Target 2025	Target Value 2022 (Realised)	Progress achieved (Realised)	Planned Target 2025	Target Value 2022 (Realised)	Progress achieved (Realised)
AT	3.36 %	4.76 %	142%			
BE	8.82 %	7.24 %	82%	4.50 %	3.56 %	79%
BG	0.156 %	0.697 %	446%	0.003 %	0 %	0%
CY				0.597 %	0.999 %	167%
CZ				0.0151 %	0.0034 %	22%
DE	2.13 %	5.97 %	281%	1.12 %	1.15 %	103%
DK	12.39 %	13.00 %	105%			
EE	49.61 %	52.99 %	107%	14.85 %	15.20 %	102%
ES	0.81 %	0.74 %	92%	0.31 %	0.21 %	68%
FI						
FR	0.06 %	0.08 %	126%	0.78 %	0.38 %	49%
GR	2.699 %	2.698 %	99.9%	0.42 %	0.27 %	64%
HR	3.80 %	5.22 %	137%	0.40 %	0.67 %	170%
HU				0.59 %	0.22 %	37%
IE	11.19 %	12.80 %	114%	0.66 %	0.51 %	76%
IT	3.60 %	4.06 %	113%	2.44 %	2.88 %	118%
LT	2.55 %	1.64 %	64%	0.43 %	1.48 %	347%
LU						
LV				1.88 %	1.56 %	83%
MT				5.31 %	8.89 %	167%
NL						
PL				0.0215 %	0.0194 %	90%
PT	0.00172 %	0.00166 %	97%	0.57 %	0.51 %	89%
RO	8.94 %	6.45 %	72%	0.66 %	0.79 %	120%
SE						
SI						
SK				0.0067 %	0.0069 %	104%
<b>EU-27 (%)<sup>8</sup></b>	<b>2.55 %</b>	<b>2.87 %</b>	<b>113%</b>	<b>0.73 %</b>	<b>0.69 %</b>	<b>95%</b>

Source: Annual Implementation Reports 2022 (AIR).

<sup>7</sup> Realised: The calculation of the target value is based on all those operations that have been completed and the last payment made.

<sup>8</sup> Target values (%) at EU level are calculated on the basis of the RDPs that activated the specific Focus Area.

### 3. Additional information

#### Rural Development Regulation 2014-2020

Regulation (EU) N° 1305/2013 of the European Parliament and of the Council on support for rural development by the European Agricultural Fund for Rural Development (EAFRD) [[PDF](#)]

#### RDP Summaries

Developed by the CAP Implementation Contact Point, these summarise the relevant information of all the RDPs approved [[here](#)]

#### RDP Priority and Focus Area Summaries

Developed by the CAP Implementation Contact Point, these summarise the relevant information of all RDP Priorities and Focus Areas [[here](#)]

**Source of information:** All data presented in this factsheet is collected from the Annual Implementation Reports (AIRs) submitted by Member States to the Commission by the end of June 2023. Data was retrieved in January 2024 from the 2022 AIRs. Exceptionally, the EURI planned expenditure is based on the latest adopted RDPs on 15 March 2024, while the EURI realised expenditure is based on declarations of expenditure up until Q4 2023.

In this factsheet, public expenditure means total public expenditure (= EAFRD + Member States matching funds + any national top-ups). Due to rounding, there may be small discrepancies between some figures presented. Data illustrated cover the programme implementation period between 2014-2022.

**Disclaimer:** This factsheet aims to provide a user-friendly summary of the progress made in the implementation of the rural development policy. While based on monitoring data submitted by Member States to the Commission, the analysis was undertaken by the CAP Implementation Contact Point, and the information presented should not be considered as official data from the European Commission.