

Rural Development Priority 4 (P4):

Restoring, preserving and enhancing ecosystems related to agriculture and forestry

Situation at the end of 2021

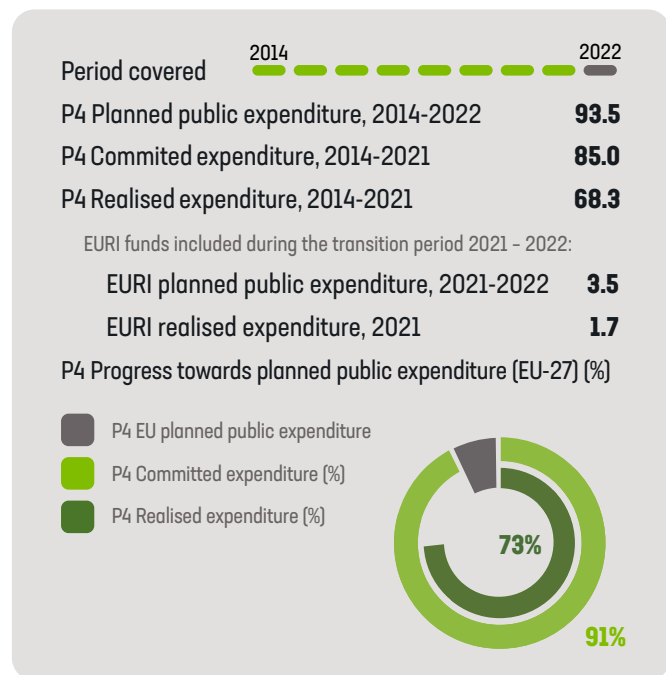
This factsheet contains monitoring data aggregated at EU level (EU-27), providing a comprehensive overview of the state of play in the implementation of the rural development Priority 4 (P4) 'Restoring, preserving and enhancing ecosystems related to agriculture and forestry'. In particular, Section 1 presents financial expenditure¹ including the additional funds introduced from the European Recovery Instrument (EURI). The data are aggregated at EU level and broken down by Member State (MS), covering the period between 2014 and end 2021. Section 2 presents the progress realised towards the EU common target indicators linked to P4.

1. Financial expenditure (RD Priority 4)

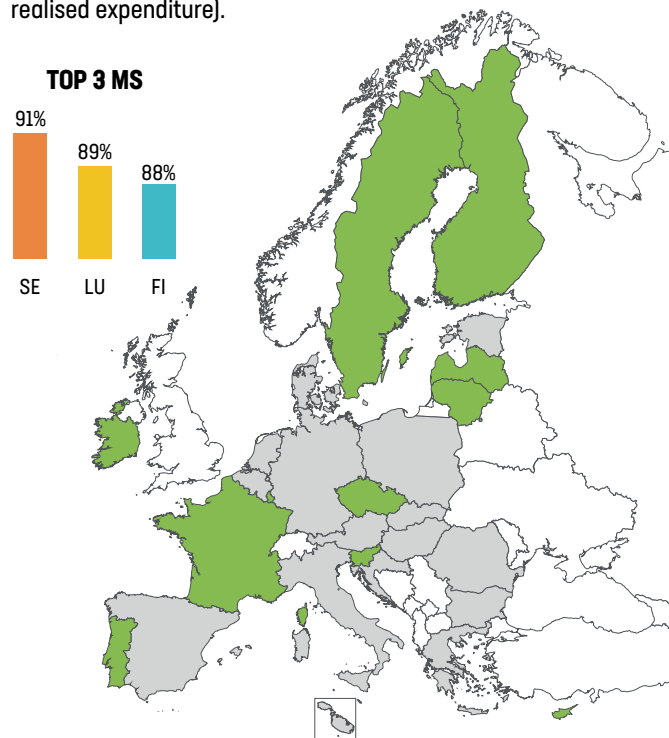
This section presents information on the progress made on public financial expenditure until December 2021, aggregated at EU level (EU-27) and broken down by Member State. The information includes planned, committed and realised expenditures, and the progress made towards achieving the planned public expenditures under P4.

1.1 P4 TOTAL PUBLIC EXPENDITURE: PLANNED, COMMITTED AND REALISED

Table 1: Overview of financial expenditure for P4 at EU level (EU-27) - Billion EUR.



Map 1: Member States with progress towards their P4 planned public expenditures above the EU average of 73% (based on realised expenditure).



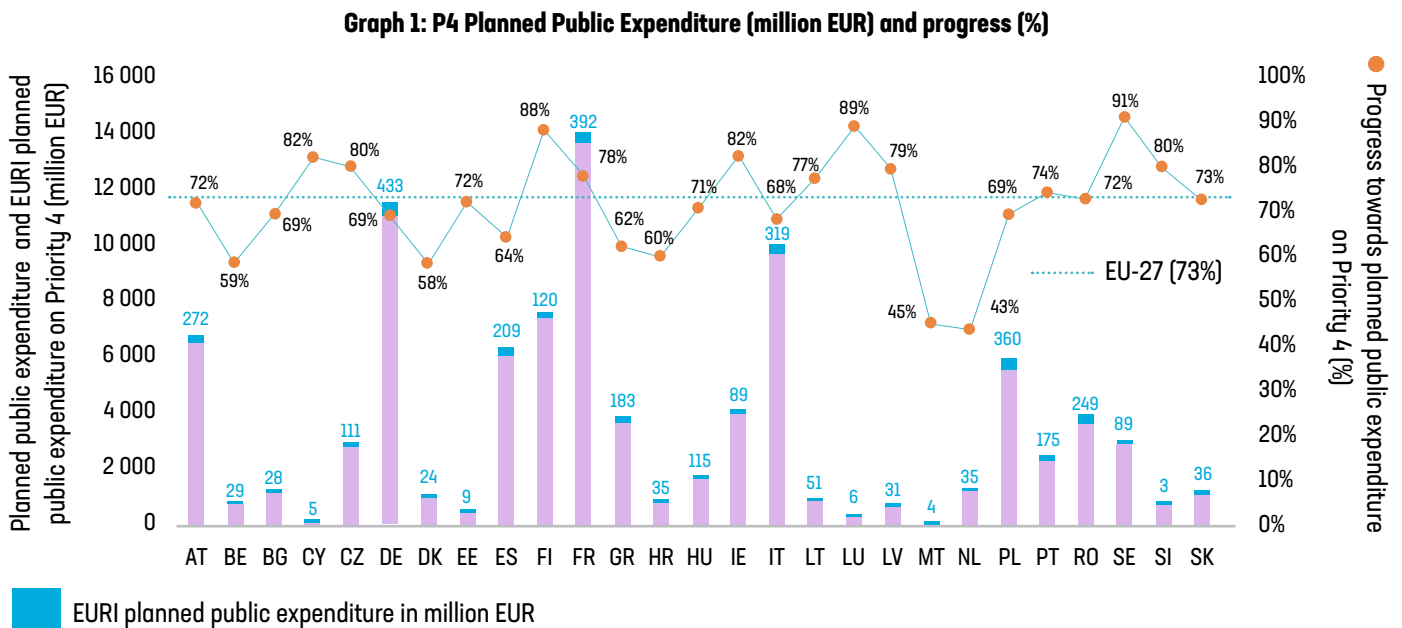
¹ Financial expenditure includes:

- i) **Committed expenditures** are related to all those applications that have been approved by the Managing Authorities/Paying Agencies
- ii) **Realised expenditures** are related to all those operations that have been completed and the last payment made.



1.2 Progress towards planned expenditures per priority 4 (%), by member state

The following graph illustrates the planned public expenditure on P4 (purple bars), and the progress made toward achieving it (orange dots based on realised expenditure) by Member State.



2. Main Achievements - Target indicators (Biodiversity) (1)

The following table provides information on the EU Common Target indicators related to P4 by Member State. It includes information on planned targets and the progress made to achieve them at the end of 2021 (based on realised expenditure*). Data is provided by Member State and aggregated at EU-level.

Not implemented in the MS
 Progress towards the target
 Target achieved (100% or more)
 Target over-achieved (more than 100%)

Focus Area 4a	T9: Percentage of agricultural land under management contracts supporting biodiversity and/or landscapes (%)			T8: Percentage of forest or other wooded areas under management contracts supporting biodiversity (%)		
	Planned Target 2025	Target Value 2021 (Realised)	Progress achieved (Realised)	Planned Target 2025	Target Value 2021 (Realised)	Progress achieved (Realised)
AT	83.1 %	82.9 %	99.7%	0.0130 %	0.0182 %	140%
BE	11.1 %	10.8 %	97%	2.11 %	1.85 %	88%
BG	12.1 %	14.2 %	117%	0.3 %	0.0 %	0%
CY	10.75 %	10.58 %	98%	7.8 %	0.0 %	0%
CZ	28.8 %	34.3 %	119%	0.1154 %	0.6005 %	520%
DE	18.1 %	16.1 %	89%	0.730 %	0.587 %	80%
DK	17.7 %	18.7 %	106%	0.483 %	3.032 %	628%
EE	70.2 %	71.1 %	101%	2.953 %	2.819 %	95%
ES	25.1 %	25.0 %	99.8%	3.86 %	1.16 %	30%
FI	17.7 %	14.8 %	84%	0.3 %	0 %	0%
FR	9.68 %	11.29 %	117%	0.4009 %	0.0025 %	0.6%
GR	26.3 %	10.6 %	40%	0.1 %	0.0 %	0%
HR	9.12 %	9.97 %	109%	0.129 %	0.039 %	30%
HU	11.8 %	17.7 %	150%	5.1 %	6.5 %	127%
IE	20.77 %	18.40 %	89%			
IT	19.3 %	21.1 %	109%	2.82 %	1.79 %	63%
LT	3.40 %	1.95 %	57%	0.510 %	0.962 %	189%
LU	89.3 %	87.0 %	97%			
LV	23.38 %	17.43 %	75%	1.5 %	1.4 %	93%
MT	8.7 %	13.3 %	153%			
NL	5.87 %	4.62 %	79%			
PL	14.1 %	7.6 %	54%	0.31 %	0.07 %	23%
PT	65.8 %	56.8 %	86%	2.10 %	1.51 %	72%
RO	9.1 %	9.7 %	107%	18.8 %	9.1 %	48%
SE	19.2 %	16.7 %	87%	0.0411 %	0.0357 %	87%
SI	33.0 %	45.8 %	139%			
SK	25.1 %	17.0 %	68%	2.724 %	2.382 %	87%
EU-27 (%)**	19.2 %	18.2 %	95%	1.80 %	0.88 %	49%

Source: Annual Implementation Reports 2022 (AIR).

*Realised: The calculation of the target value is based on all those operations that have been completed and the last payment made.

** Target values (%) at EU level are calculated on the basis of the RDPs that activated the specific Focus Area.

2. Main Achievements – Target indicators (Water management) (2)

The following table provides information on the EU Common Target indicators related to P4 by Member State. It includes information on planned targets and the progress made to achieve them at the end of 2021 (based on realised expenditure*). Data is provided by Member State and aggregated at EU-level.

Not implemented in the MS
 Progress towards the target
 Target achieved (100% or more)
 Target over-achieved (more than 100%)

Focus Area 4A	T10: Percentage of agricultural land under management contracts supporting biodiversity and/or landscapes (%)			T11: Percentage of forest or other wooded areas under management contracts supporting biodiversity (%)		
	Planned Target 2025	Target Value 2021 (Realised)	Progress achieved (Realised)	Planned Target 2025	Target Value 2021 (Realised)	Progress achieved (Realised)
AT	75.3 %	79.9 %	106%			
BE	10.5 %	9.2 %	88%			
BG	2.66 %	2.23 %	84%			
CY	10.69 %	4.24 %	40%	7.8 %	0 %	0%
CZ	15.8 %	15.1 %	96%			
DE	8.91 %	7.67 %	86%	0.4 %	0.4 %	100%
DK	25.66 %	25.79 %	101%	0.04567 %	1.2530 %	2744%
EE	63.9 %	69.9 %	109%			
ES	20.1 %	19.9 %	99%	2.34 %	0.65 %	28%
FI	79.8 %	83.2 %	104%			
FR	9.1 %	9.6 %	105%	0.0546 %	0.0003 %	0.5%
GR	26.1 %	10.6 %	41%	0.04 %	0 %	0%
HR	11.8 %	10.6 %	90%	0.129 %	0.039 %	30%
HU	3.569 %	5.301 %	149%	0.585 %	0.735 %	126%
IE	20.9 %	20.1 %	96%			
IT	19.28 %	16.30 %	85%	1.019 %	0.784 %	77%
LT	0.656 %	0.260 %	40%			
LU	28.2 %	19.7 %	70%			
LV	28.4 %	21.5 %	76%			
MT	2.98 %	4.12 %	133%			
NL	5.9 %	0.2 %	3%			
PL	14.0 %	7.5 %	54%			
PT	39.4 %	30.8 %	78%	2.81 %	1.62 %	58%
RO	10.7 %	10.7 %	100%			
SE	14.4 %	7.6 %	53%			
SI	28.9 %	40.8 %	141%			
SK	24.7 %	17.0 %	69%	1.20 %	1.40 %	117%
EU-27 (%)**	16.8 %	15.0 %	89%	0.51 %	0.22 %	43%

Source: Annual Implementation Reports 2022 (AIR).

*Realised: The calculation of the target value is based on all those operations that have been completed and the last payment made.

** Target values (%) at EU level are calculated on the basis of the RDPs that activated the specific Focus Area.

2. Main Achievements – Target indicators (Soil erosion) (3)

The following table provides information on the EU Common Target indicators related to P4 by Member State. It includes information on planned targets and the progress made to achieve them at the end of 2021 (based on realised expenditure*). Data is provided by Member State and aggregated at EU-level.

Not implemented in the MS
 Progress towards the target
 Target achieved (100% or more)
 Target over-achieved (more than 100%)

Focus Area 4C	T12: Percentage of agricultural land under management contracts to improve soil management and/or prevent soil erosion (ha) (%)			T13: Percentage of forestry land under management contracts to improve soil management and/or prevent soil erosion (ha) (%)		
	Planned Target 2025	Target Value 2021 (Realised)	Progress achieved (Realised)	Planned Target 2025	Target Value 2021 (Realised)	Progress achieved (Realised)
AT	78.5 %	82.6 %	<div style="width: 105%; background-color: #008000; height: 10px;"></div> 105%	2.00 %	2.04 %	<div style="width: 102%; background-color: #008000; height: 10px;"></div> 102%
BE	7.76 %	7.45 %	<div style="width: 96%; background-color: #00a0e3; height: 10px;"></div> 96%			
BG	1.3 %	2.2 %	<div style="width: 169%; background-color: #92d050; height: 10px;"></div> 169%	2.3 %	0 %	0%
CY	22.3 %	14.3 %	<div style="width: 64%; background-color: #00a0e3; height: 10px;"></div> 64%	7.8 %	0 %	0%
CZ	16.8 %	15.6 %	<div style="width: 93%; background-color: #00a0e3; height: 10px;"></div> 93%	0.523 %	0.687 %	<div style="width: 131%; background-color: #008000; height: 10px;"></div> 131%
DE	8.3 %	7.6 %	<div style="width: 92%; background-color: #00a0e3; height: 10px;"></div> 92%	0.54 %	0.54 %	<div style="width: 100%; background-color: #92d050; height: 10px;"></div> 100%
DK	12.157 %	12.584 %	<div style="width: 104%; background-color: #008000; height: 10px;"></div> 104%			
EE	71.0 %	69.9 %	<div style="width: 98%; background-color: #00a0e3; height: 10px;"></div> 98%			
ES	18.75 %	20.25 %	<div style="width: 108%; background-color: #008000; height: 10px;"></div> 108%	3.05 %	1.55	<div style="width: 51%; background-color: #00a0e3; height: 10px;"></div> 51%
FI	53.6 %	70.7 %	<div style="width: 132%; background-color: #008000; height: 10px;"></div> 132%			
FR	6.23 %	7.98 %	<div style="width: 128%; background-color: #008000; height: 10px;"></div> 128%	0.056 %	0.002 %	<div style="width: 4%; background-color: #00a0e3; height: 10px;"></div> 4%
GR	25.3 %	10.1 %	<div style="width: 40%; background-color: #00a0e3; height: 10px;"></div> 40%	0.8 %	0 %	0%
HR	11.4 %	10.1 %	<div style="width: 89%; background-color: #00a0e3; height: 10px;"></div> 89%	0.129 %	0.039 %	<div style="width: 30%; background-color: #00a0e3; height: 10px;"></div> 30%
HU	8.39 %	12.37 %	<div style="width: 147%; background-color: #008000; height: 10px;"></div> 147%	0.77 %	0.98 %	<div style="width: 127%; background-color: #008000; height: 10px;"></div> 127%
IE	18.08 %	18.05 %	<div style="width: 99.8%; background-color: #00a0e3; height: 10px;"></div> 99.8%			
IT	19.6 %	16.1 %	<div style="width: 82%; background-color: #00a0e3; height: 10px;"></div> 82%	2.0 %	0.6 %	<div style="width: 30%; background-color: #00a0e3; height: 10px;"></div> 30%
LT	10.2 %	6.7 %	<div style="width: 66%; background-color: #00a0e3; height: 10px;"></div> 66%			
LU	19.1 %	19.8 %	<div style="width: 104%; background-color: #008000; height: 10px;"></div> 104%			
LV	28.4 %	21.5 %	<div style="width: 76%; background-color: #00a0e3; height: 10px;"></div> 76%			
MT	2.98 %	12.28 %	<div style="width: 412%; background-color: #008000; height: 10px;"></div> 412%			
NL	0.481 %	1.346 %	<div style="width: 280%; background-color: #008000; height: 10px;"></div> 280%			
PL	16.8 %	9.4 %	<div style="width: 56%; background-color: #00a0e3; height: 10px;"></div> 56%	0.31 %	0.07 %	<div style="width: 23%; background-color: #00a0e3; height: 10px;"></div> 23%
PT	56.8 %	44.0 %	<div style="width: 77%; background-color: #00a0e3; height: 10px;"></div> 77%	2.83 %	1.64 %	<div style="width: 58%; background-color: #00a0e3; height: 10px;"></div> 58%
RO	4.0 %	4.5 %	<div style="width: 113%; background-color: #008000; height: 10px;"></div> 113%	0.84 %	0.02 %	<div style="width: 2%; background-color: #00a0e3; height: 10px;"></div> 2%
SE	16.3 %	9.8 %	<div style="width: 60%; background-color: #00a0e3; height: 10px;"></div> 60%			
SI	31.4 %	42.3 %	<div style="width: 135%; background-color: #008000; height: 10px;"></div> 135%			
SK	20.7 %	17.0 %	<div style="width: 82%; background-color: #00a0e3; height: 10px;"></div> 82%	1.2 %	1.4 %	<div style="width: 117%; background-color: #008000; height: 10px;"></div> 117%
EU-27 (%)**	15.8 %	14.7 %	<div style="width: 93%; background-color: #00a0e3; height: 10px;"></div> 93%	0.8 %	0.4 %	<div style="width: 50%; background-color: #00a0e3; height: 10px;"></div> 50%

Source: Annual Implementation Reports 2022 (AIR).

*Realised: The calculation of the target value is based on all those operations that have been completed and the last payment made.

** Target values (%) at EU level are calculated on the basis of the RDPs that activated the specific Focus Area.

3. Additional information

Rural Development Regulation 2014-2020

Regulation (EU) N° 1305/2013 of the European Parliament and of the Council on support for rural development by the European Agricultural Fund for Rural Development (EAFRD) [[PDF](#)]

RDP Summaries

Developed by the CAP Implementation Contact Point, these summarise the relevant information of all the RDPs approved [[here](#)]

RDP Priority and Focus Area Summaries

Developed by the CAP Implementation Contact Point, these summarise the relevant information of all RDP Priorities and Focus Areas [[here](#)]

Source of information: All data presented in this factsheet is collected from the Annual Implementation Reports (AIRs) submitted by Member States to the Commission by the end of June 2022. Data was retrieved in January 2023 from the 2022 AIRs. Exceptionally, the EURI planned expenditure is based on the latest adopted RDPs on 17 March 2023, while the EURI realised expenditure is based on declarations of expenditure up until Q4 2022.

In this factsheet, public expenditure means total public expenditure (= EAFRD + Member States matching funds + any national top-ups). Due to rounding, there may be small discrepancies between some figures presented. Data illustrated cover the programme implementation period between 2014-2021

Disclaimer: This factsheet aims to provide a user-friendly summary of the progress made in the implementation of the rural development policy. While based on monitoring data submitted by Member States to the Commission, the analysis was undertaken by the CAP Implementation Contact Point and the information presented should not be considered as official data from the European Commission.

CAP Implementation Contact Point

Rue de la Loi, 38 Boîte n.4 - 1040

Brussels, Belgium

implementation@eucapnetwork.eu

eu-cap-network.ec.europa.eu



Funded by
the European Union