



TOOL 1.1

INDICATIVE ROADMAP FOR THE EX-ANTE EVALUATION AND STRATEGIC ENVIRONMENTAL ASSESSMENT OF THE CAP STRATEGIC PLAN

12 JUNE 2019

Disclaimer: *This tool has been prepared by evaluation experts based on good practice available from the current programming period. The document has been consulted with a Sounding Board including Member States' representatives in April 2019 and has been reviewed in line with the comments received. This document is non-binding and only intended to facilitate the work of evaluators and managing authorities in the context of preparing the ex-ante evaluation of the CAP Strategic Plans. The document is based on the legal proposal for the CAP Strategic Plan Regulation, COM/2018/392 final and does not anticipate any content of any legislative act. It has no interpretative value.*

THEMATIC WORKING GROUP NO 7

'PREPARING FOR THE EX-ANTE EVALUATION OF THE CAP STRATEGIC PLAN'



Thematic Working Group: Preparing for the ex ante evaluation of the CAP Strategic Plan

You can find all the tools for the Thematic Working Group, 'Preparing for the ex ante evaluation of the CAP Strategic Plan', in the European Evaluation Helpdesk's eLibrary:

https://enrd.ec.europa.eu/evaluation/publications/_en

1. Working Package 1: Preparing the ex ante evaluation;

- Tool 1.1 - Indicative roadmap for the ex ante evaluation and Strategic Environmental Assessment of the CAP Strategic Plan;
- Tool 1.2 - Indicative outline of terms of reference for the ex ante evaluation of the CAP Strategic Plan;
- Tool 1.3 - Indicative outline of terms of reference for the Strategic Environmental Assessment of the CAP Strategic Plan;
- Tool 1.4 - Stakeholder mapping checklist.

2. Working Package 2: Appraisal of the SWOT and needs assessment;

- Tool 2.1 – Examples of guiding questions supporting the appraisal of the assessment of needs including the SWOT;
- Tool 2.2 – Analytical tables supporting the appraisal of the assessment of needs including the SWOT.

3. Working Package 3: Appraisal of the intervention strategy, targets and milestones;

- Tool 3.1 – Examples of guiding questions for the appraisal of the intervention strategy, targets and milestones;
- Tool 3.2 – Working steps for the appraisal of the intervention strategy of the CAP Strategic Plan;
- Tool 3.3 – Appraisal of quantified target values and milestones;
- Tool 3.4 – Working steps for supporting the appraisal of the rationale for the use of financial instruments.

4. Working Package 4: Appraisal of the planned monitoring, data collection and implementation arrangements of the CAP Strategic Plan.

- Tool 4.1 - Examples of guiding questions supporting the appraisal of the planned monitoring, data collection and implementation arrangements of the CAP Strategic Plan.



Intro

The following slides show possible ways of organizing the Ex-ante evaluation and Strategic Environmental Assessment (SEA) as interlinked exercises to the programming of the CAP Strategic Plan:

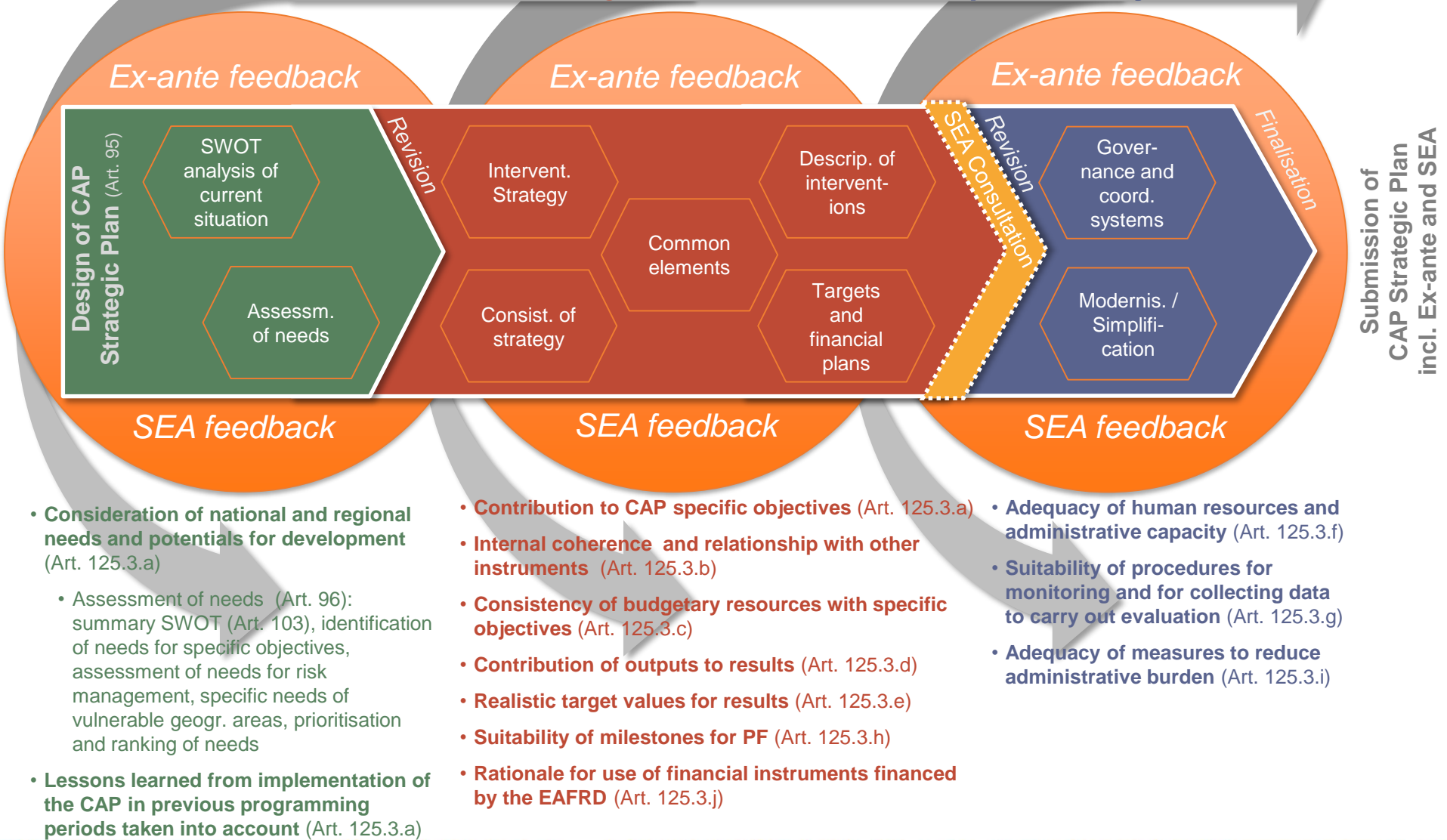
- **The first figure** focuses on the Ex-ante evaluation. It provides step-by-step feedback along the preparation of the single chapters of the CAP Strategic Plan, keeping in mind the consistency and living character of the whole CAP Strategic Plan until its submission.
- **The second figure** focuses on the SEA, providing an iterative feedback on the CAP Strategic Plan from an environmental point of view, covering the various elements, reporting and consultation requirements included in the SEA directive and its national transpositions.

Ex-ante evaluation (incl. SEA) of CAP Strategic Plan

Based on COM (2018)392 final and Directive 2001/42/EC



- 1 Appraisal of the assessment of needs incl. SWOT
- 2 Appraisal of the intervention strategy, targets, milestones
- 3 Appraisal of monitoring, data collection, implementation system



SEA and Ex-ante evaluation of CAP Strategic Plan

Based on COM (2018)392 final and Directive 2001/42/EC



1 Appraisal of the assessment of needs incl. SWOT

2 Appraisal of the intervention strategy, targets, milestones

3 Appraisal of monitoring, data collection, implementation system

