



Subgroup on Innovation & Knowledge Exchange (SolKE) 9th meeting

5 June 2025



Funded by
the European Union



Presentation of the AGROECOLOGY Partnership and France perspective on the partnership

Mary-Eve Henrotte, Agence Nationale de la Recherche



AGROECOLOGY – Accelerating Farming Systems Transition: Agroecology Living Labs and Research Infrastructures

Overview, status Jan 2025

Mary-Eve Henrotte
mary-eve.henrotte@agencerecherche.fr



**Co-funded by
the European Union**

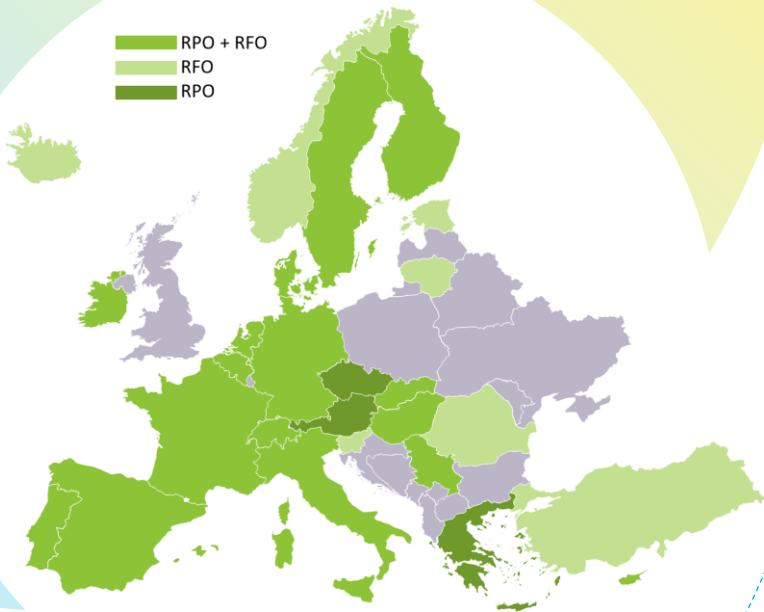
Co-funded by the European Union. Views and opinions expressed are however those of the author(s) only and do not necessarily reflect those of the European Union or European Research Executive Agency (REA). Neither the European Union nor the granting authority can be held responsible for them.

Follow
AGROECOLOGY
Partnership



Subscribe to
our newsletter

“Team-up and unlock the transition to agroecology so that farming systems are resilient, productive and prosperous, place-sensitive, as well as climate, environment, ecosystem, biodiversity and people-friendly by 2050.”



AGROECOLOGY in a nutshell



Jan 2024 to Dec 2033

Horizon Europe co-funded partnership in Cluster 6
Phase 2 for AGROECOLOGY is approaching (see WP2025)



Pool resources of EU and states/regions

Mobilisation of 300 Mio € (50% co-funded)

In-kind: research and networking activities

In-cash: up to 7 transnational calls for proposals



72 partners from 26 states/regions

RFOs: National/Regional Authorities, ministries,
Funding agencies

RPOs: Research performing organisations



Visit us: <https://www.agroecologypartnership.eu/>

Coordination: Project Management Juelich (DE)

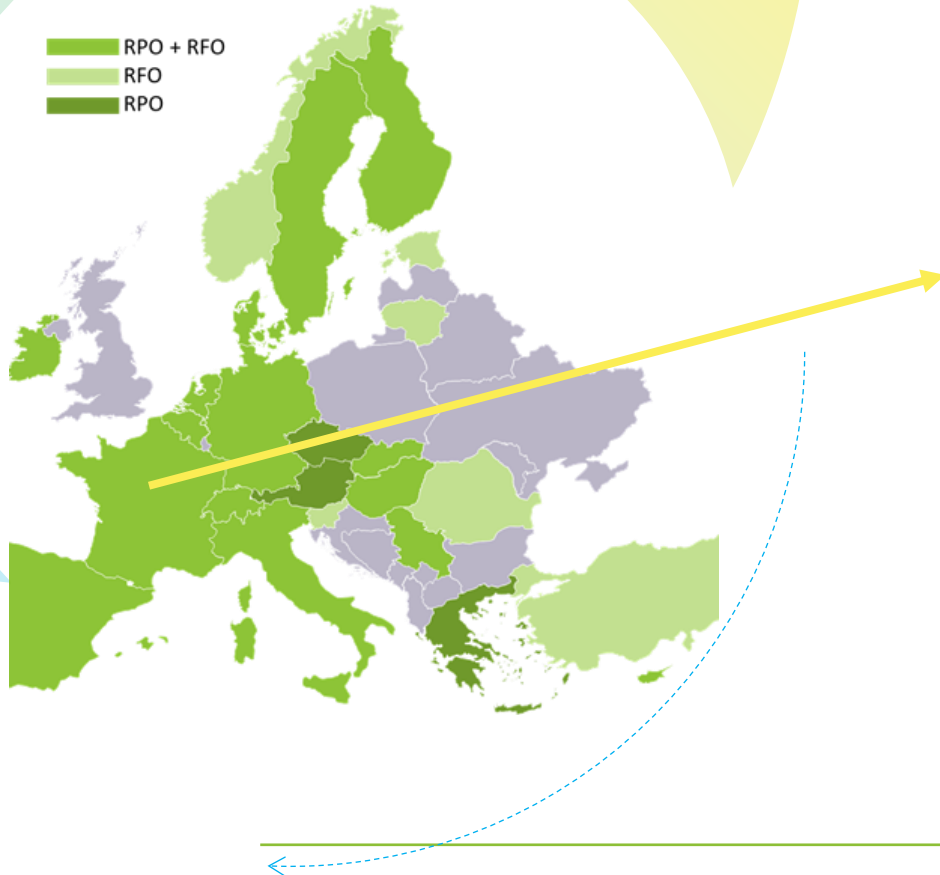
ptj-agroecology-secretariat@fz-juelich.de

Co-coordination: ANR (FR)





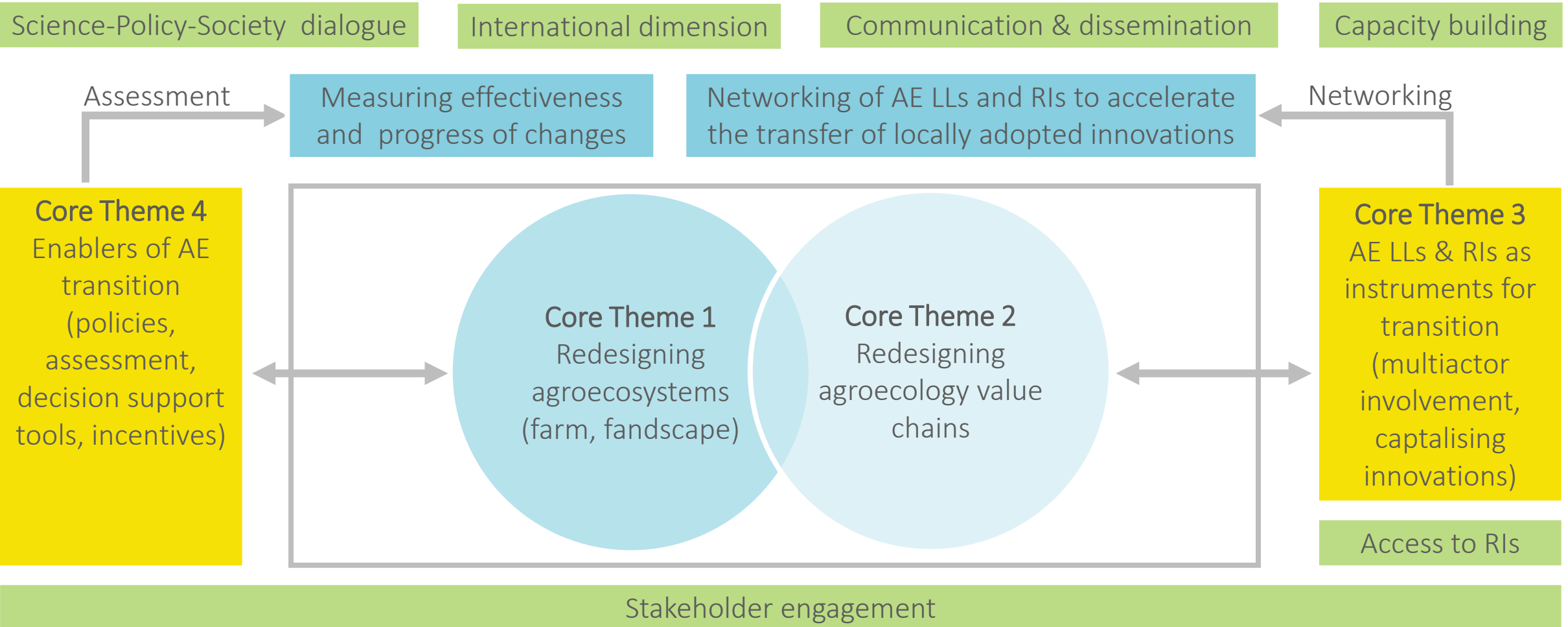
6 different actors in the partnership



- ANR
- Région Pays de Loire
- INRAE
- CIRAD
- CNRS
- IRD
- Vegepolys Valley : Stakeholder

Research
funding
organisation

Research
performing
organisation





Partners from France have been involved in activities that led the path for the AGROECOLOGY partnership:

- Coordinated two **Coordination and Support Actions** that were made to prepare the partnership (CSA ALLREADY coordinated by Heather McKann, INRAE, and CSA AE4EU by Alexander Wezel, ISARA)
- Inrae, with Canada, is part of the organisation of the International Forum for Agroecosystems Living Labs



[More informations here](#)



2 types of activities are covered by the partnership (mapped in each Annual Work Plans) :

- **Building the agroecological transition :**
 - Living Labs and Research Infrastructures :
 - Focused on facilitating the mobilisation, coordination and empowering AKIS AE LL and RI
 - Collaborating with other international networks and projects
 - Science policy dialogue
 - Capacity building
 - Monitoring agroecology transition
- **Financing research :**
 - Each year, we open an opportunity for actors of agroecology to get funded
 - One of the criterias for the projects to be funded is that they work in Living Labs



2 work packages are dedicated to LL and RI networking and expanding their capacities :

Coordination of European Network of AE LL and RI

Objectives :

- Consolidate and further develop the European Network of AE LL and RIs
- Improve the access to and the availability of AE LLs & RIs knowledge, data and experiences
- **Connect and build synergies with other international AE LL & RI networks and projects**
- Evaluate the performance of the Network and its contribution to AE transition by putting in place a monitoring framework

Expanding the capacities of LLs and RIs

Objectives :

- **Strengthen the AKIS by facilitating the mobilization of AKIS actors in LLs and RIs across EU**
- Provide an up-to-date inventory of AE LLs & RIs across EU
- Identify key value chain actors and stakeholders and strengthen their engagement
- Improve the capacity of farmers and actors of the agri-food chain to take up AE innovations
- Improve the understanding of the long-term sustainability of LLs and RIs
- Improve the access to knowledge and use of services by providing a program and tools to share best practices



1st co-funded call (closed)



Set up

Two-step procedure (Feb – Sep 2024)
35 Funding agencies from 22 countries and regions



Fostering agroecology at farm and landscape levels

Theme 1: Focus on the farm level and its immediate surroundings.

Theme 2: Explore agroecology at the landscape or territorial level.



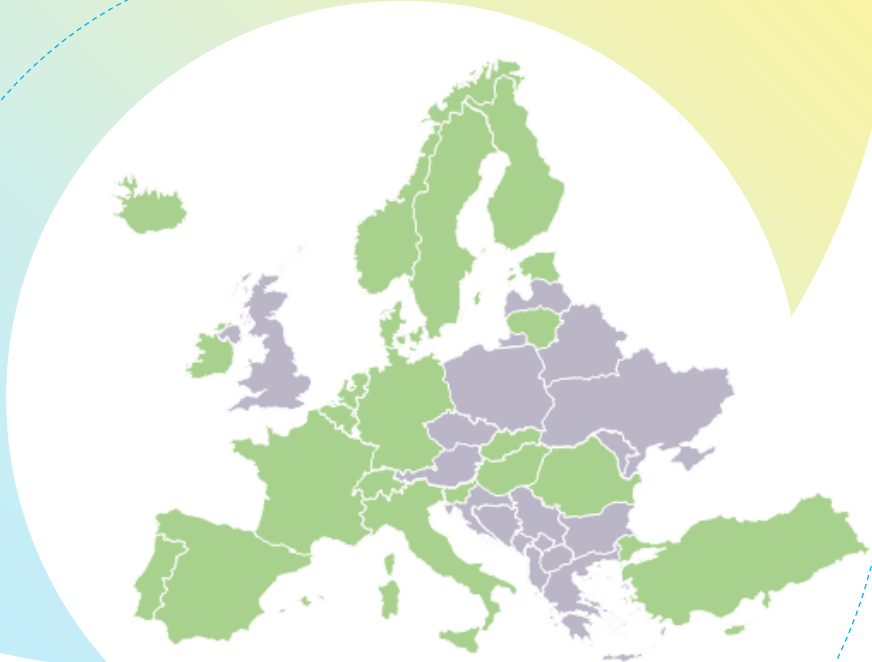
89 pre proposals and 38 invited full proposals

Peer review by an International Expert Panel



19 projects selected

37 Mio € committed funding
188 partners from 22 countries and regions





CropCAT : Upscaling minor crops with institutional catering

Builds living labs with schools canteens, local chain value actors, and local farmers, to supply the schools with local and quality food.

- Aims to develop the use of minor crops by using institutional catering as leverage
- Takes into account the entire value chain
- As a real added value in integrating all the stakeholders

SAFER : Strengthening Agricultural landscape multiFunctionality through expansion of agroecological farming in EuRope

Taking agroecology from a farm level to a landscape scale.

- Aims to design innovative solutions for farmers and upscale agroecology
- Co-designs the solutions with active stakeholder engagement

2nd co-funded call (open)



Timeline

Pre proposal submission deadline: 17 Feb 2025, 2 pm CET
Full proposal submission deadline: 09 July 2025, 2 pm CEST
29 Funding agencies from 20 countries and regions



Integrating environmental, economic and social perspectives in assessing the performance of agroecology. Value-chain and policy implications

Topic 1: Determine and assess benefits/impacts and trade-offs of agroecology, and identify best practices

Topic 2: Transform value chains, business models and policies to facilitate the transition to agroecology



Preparation of the phase 2 of the partnership with new activities and goals:

- **Enlarge the partnership** to new partners and countries
- **Consolidate the LL and RI network** by developing new interactions between them
- **Reinforce the links with AKIS actors**
- **Reduce educationnal barriers** to agroecology transition

Follow
AGROECOLOGY
Partnership



Subscribe to
our newsletter

14

THANK YOU !

Questions ?

Contact

Mary-Eve Henrotte

mary-eve.henrotte@agencerecherche.fr



Funded by
the European Union