



# EU CAP Network workshop 'Innovation in logistics to improve the position of farmers in a supply chain'

Rouen, France  
20-21 May 2025





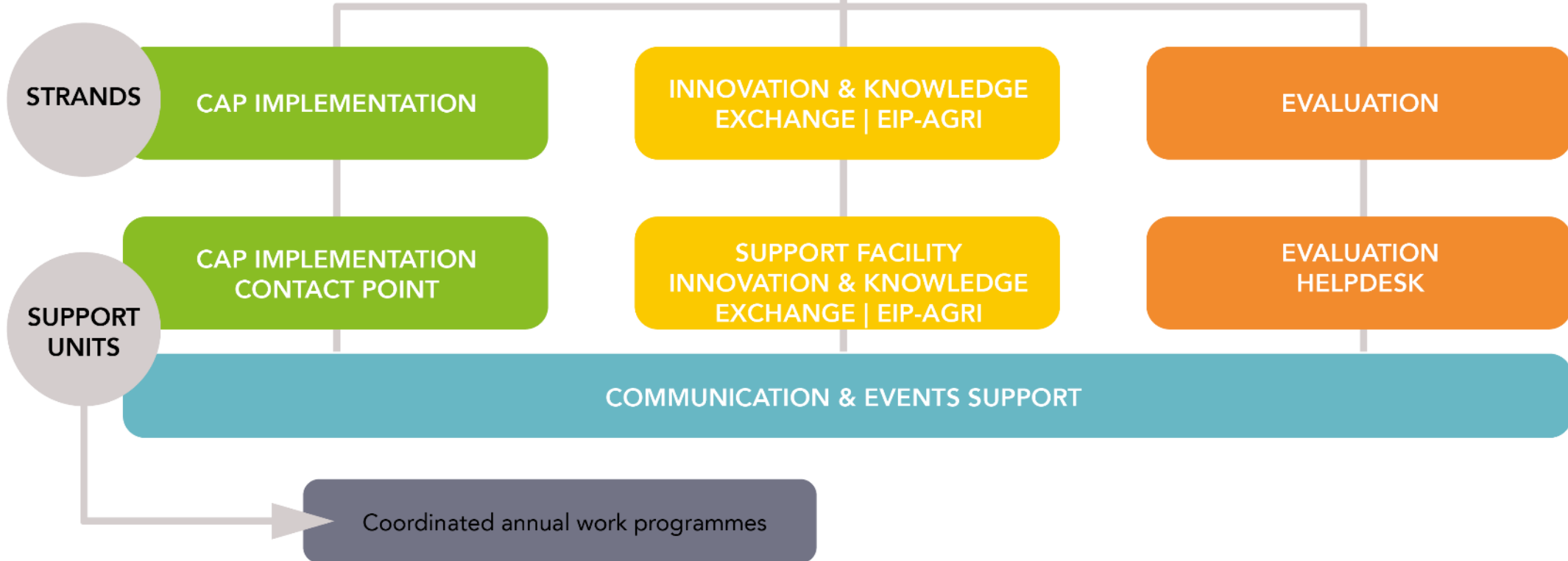
# The Support Facility 'Innovation and knowledge exchange | EIP-AGRI'

Sergiu Didicescu  
Deputy Team Leader, EIP AGRI Support Facility



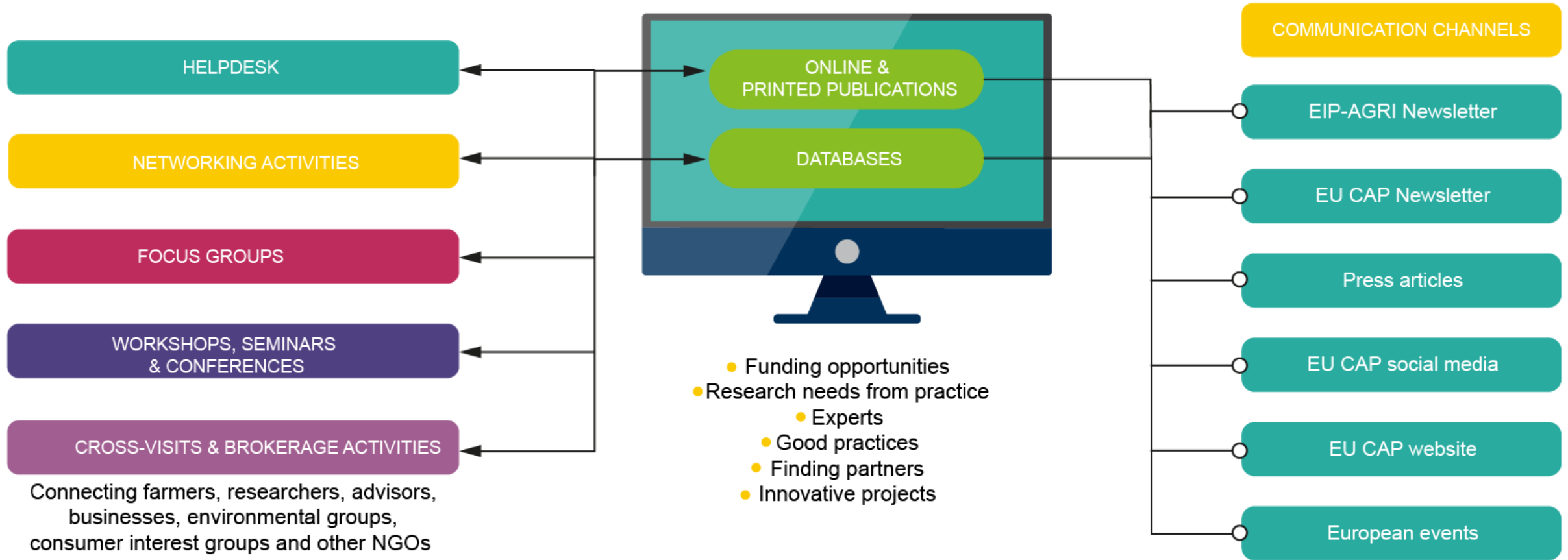


# EU CAP Network support units





# Support Facility Innovation and Knowledge exchange | EIP-AGRI': services





# What we do - Newsletters

Monthly [newsletters](#)

- Innovation & Knowledge Exchange | EIP-AGRI
- EU CAP Network

Subscribe [here](#)



[View this email in your browser](#) | [Unsubscribe](#)

**Innovation and knowledge exchange | EIP-AGRI Newsletter**  
October 2024

## Inspirational ideas

### Empowering rural women innovators across Europe

The Horizon Europe GRASS CEILING project empowers rural women and ensures a greater number of women are leading socio-ecological innovations in agriculture, the rural economy and rural communities. To achieve its goal, the project has established living labs in nine different countries.

[Read more](#)



### Training 10 000 European advisors to help accelerate the shift to climate-resilient farming

Horizon Europe project ClimateSmartAdvisors will create a network to boost European agricultural advisory services to promote the widespread adoption of climate-smart farming practices amongst farmers.

[Read more](#)



# Publications on Innovation



especially in southern countries of Europe,



We want to benefit by collaborating



and everything is grown organically.

**EU CAP NETWORK**

**Innovation, Knowledge exchange | EIP-AGRI**

**Crop associations including Milpa and protein crops**

**How to integrate crop associations into existing cropping systems and farm landscapes to increase farm resilience and efficient use of natural resources while reducing the dependency on external inputs?**

European cropping systems are dominated by specialised forms growing simplified crop sequences, frequently based on cereals or grasslands (c.60% crop sequences). This simplification, based on a small number of high input monocultures, has contributed towards environmental degradation and biodiversity losses in agricultural landscapes. Crop associations not only increase crop diversity within a field and provide resources for wider agrodiversity, but also improve crop productivity, regulate pests and diseases naturally, increase soil fertility, and reduce pollution through less use of pesticide and fertiliser inputs.

- Add value to crop association products, to increase economic viability
- Introduce crop association practices gradually, using practices that provide stepping stones in the transition from monocrops.
- Seek out existing knowledge from a variety of information sources using systematic search strategies.

Success factors of implementing crop associations included their potential for reducing external inputs, diversifying the farm business, increasing income from subsidies, using land more efficiently, and spreading the workload on the farm throughout the year. Agronomic, economic, and social barriers to enable widespread the potential of different complexity of managing diversified cropping systems, and potentially higher costs and labour, leading to some reluctance to invest effort when returns are uncertain.

**Key findings from the Focus Group on Crop associations including Milpa and protein crops, which aimed to increase the challenge of crop associations and encourage their uptake, included overall:**

- Members crop associations by making use of existing equipment, with machinery adaptations as and where needed, and also by tapping into the practical experiences of others engaged in crop mechanisation.
- Adapt breeding and variety testing schemes to assess maize ability that allow the identification of suitable plant cultivars and varieties.

**Next Steps:**  
EU CAP Network Focus Group  
Crop associations including Milpa and protein crops

**EU CAP NETWORK**

**EU CAP NETWORK PRESENTATION**

**Empowering rural women innovators across Europe**

GRASS DELIND project establishes living labs for rural women innovators in nine countries and strives for gender equality in rural and agricultural innovation systems

The Horizon Europe GRASS DELIND project seeks to empower rural women and increase the number of women leading socio-ecological innovations in agriculture, the rural economy and land communities. These innovations aim to find solutions to social challenges while considering the environmental impact. To achieve its goal, the project has established multi-actor living labs in nine countries: Croatia, Mexico, Italy, Lithuania, Norway, Scotland, Spain, Sweden and the Netherlands.

In each of these countries, the project partners bring together rural women innovators, life scientists and academics, connecting practice with research. These living labs provide an opportunity to network, share experiences and acquire the necessary skills for innovation and for achieving the socio-ecological transition. At the same time, each living lab focuses on an issue that women on the local level establish a network for sharing knowledge by capturing and publishing innovations and practical experience.

Wanda Jakóč is a Croatian entrepreneur who is participating in the project's living lab in Croatia. She produces dried sausages by processing sheep meat that is often abandoned in the fields of the island of Dugi Otok. The project is a great opportunity to network with innovators ('cluster women') and she believes that the biggest benefit of the GRASS DELIND project is the exchange of knowledge, especially of solutions to the many obstacles we face on a daily basis.

The living lab organises closed coaching sessions with women as well as multi-actor sessions with women and relevant Agricultural Knowledge and Innovation Systems (AKIS) actors. GRASS DELIND will record progress made by these women innovators through in-depth case studies and educate rural entrepreneurs about the type of support they need. The experiences can be put into practice when working with other rural women innovators.

Lucas Pico is a Spanish poultry farmer, highlights the importance of GRASS DELIND in providing an important way for the voices of rural women to be heard. She is one of the participants in the Spanish living lab and is an initially self-taught entrepreneur who later trained in agriculture and livestock farming to set up her hen farm. Lucas says she has met other women in the sector with similar problems, and sharing their experiences helps them to find good solutions. We must continue to enhance the visibility of rural women. We are gradually making progress, but there is still much to do.

**EU CAP NETWORK**

**EU CAP NETWORK PRESENTATION**

**Innovation, Knowledge exchange | EIP-AGRI**

**Competitive and resilient mountain areas**

**Which innovative approaches and innovations linked to agriculture, forestry and the bioeconomy can foster the competitiveness and the socio-economic and environmental resilience of mountain areas and their communities?**

Mountain communities face significant environmental, societal, economic, and migratory challenges, which render them ecologically and socially vulnerable, as well as fragile. A Focus Group of 20 experts has looked for innovative ways for mountain areas to remain competitive and resilient in the long term.

The key findings from the Focus Group on 'Competitive and resilient mountain areas' are:

- The most promising opportunities in mountain areas are the growing markets for specialised local niche products, the high quality of mountain products, local brands, sustainable tourism, a quiet and remote environment, green space and social learning activities, the existence of beautiful landscapes, unique biodiversity, and a range of further common goods, as well as living traditions and historic buildings.
- The good governance, historical practices and traditions are a backbone when it comes to innovation.
- Agriculture, forestry and the bioeconomy in mountain areas operate in a complex and dynamic human-nature system, and long-term and transformative solutions are needed to increase resilience in the regional level.
- Social innovation is playing key role in the transformation, allowing the innovation in products, processes and marketing.

**Next Steps:**  
Expert on the EU CAP Network Focus Group  
Competitive and resilient mountain areas

**EU CAP NETWORK**

**EU CAP NETWORK PRESENTATION**

**Innovation, Knowledge exchange | EIP-AGRI**

**Circular water solutions**

Innovation for agriculture, forestry and rural areas

The success of innovation in rural (mountain) areas is challenged by the lack of scale in terms of population and industrial base, and the distance from economic partners and centres of innovation, which makes the diffusion of innovation knowledge more difficult.

Finally, the drivers for innovation and the public policies to guide innovation are, as yet, not fully understood. In order to unlock this knowledge, the members of the Focus Group have identified several factors that are responsible for the successful implementation of innovations in mountain areas, in terms of organisation, strategic planning and management, as well as access to infrastructure, funding and other resources.

The key findings from the Focus Group on 'Circular water solutions for agriculture, forestry and rural areas' are:

- Circular solutions for non-farm water management.
- Reusing treated water from agri-food industries at farm level.

**Next Steps:**  
Expert on the EU CAP Network Focus Group  
Circular water solutions for agriculture, forestry and rural areas

**EU CAP NETWORK**

**EU CAP NETWORK PRESENTATION**

**Innovation, Knowledge exchange | EIP-AGRI**

**Operational Groups: Innovation in practice**

EIP-AGRI Innovation Awards 2024

5 Sustainable management of natural resources in farming practices

10 Business models in food supply chains

15 Animal welfare and husbandry

20 Climate change mitigation and adaptation

25 Sustainable forest management

30 Digitalisation

**Next Steps:**  
Expert on the EU CAP Network Focus Group  
Operational Groups: Innovation in practice

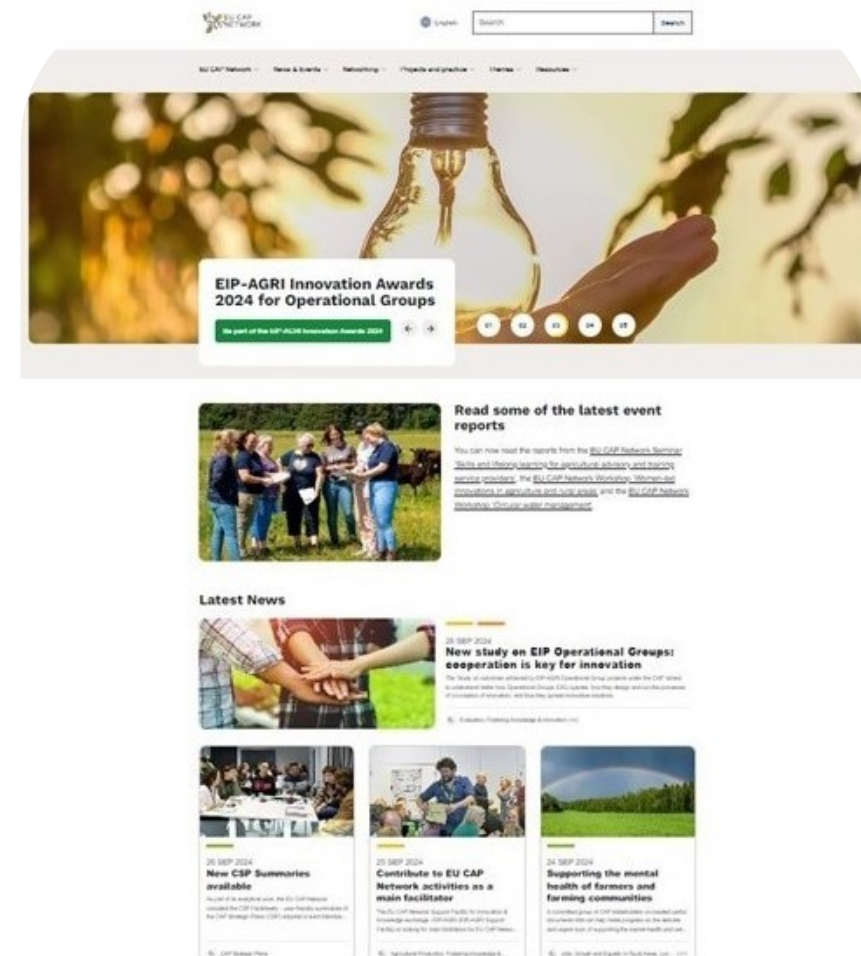




# What we do

## Content for the website

- EU CAP Network website - part dedicated to [Innovation & knowledge exchange | EIP-AGRI](#)
- EIP-AGRI [Focus Groups](#) (53), and challenge videos
- EIP-AGRI events - seminars, workshops, brokerage events, cross-visits, field visits – [here](#) (also [here](#))
- Research needs from practice – search under ‘Publications’, the latest [here](#)
- Publications - Agrinnovation magazines, brochures, factsheets, reports from events and focus groups – [here](#)
- Press articles - website (under ‘News’ [here](#)) & newsletter
- Monthly [newsletters](#) - Innovation & Knowledge Exchange | EIP-AGRI + EU CAP Network



## What we do - Social media

### Social media accounts

- › Facebook – @EU CAP Network
- › Twitter - @eucapnetwork
- › LinkedIn - @EU CAP Network
- › YouTube - EU CAP Network

› Official hashtags

**#EUCAPNetwork**

**#BloomTogether**

 **#hashtags**



# Propose networking topics

## Suggest a new topic

Do you have an idea for a Focus Group? Is the topic focused and the question well defined? Then why not suggest a new Focus Group topic.

[Suggest a new topic](#)



# **EU CAP Network workshop**

## **‘Innovation in logistics to improve the position of farmers in a supply chain’**

**20 – 21 May 2025**  
**Rouen, France**

All information on the workshop is available on the [event webpage](#)

