



Enhancing Biodiversity on Farmland for Improved Resilience

Examples from England (UK)

Kaley Hart, EU CAP Network



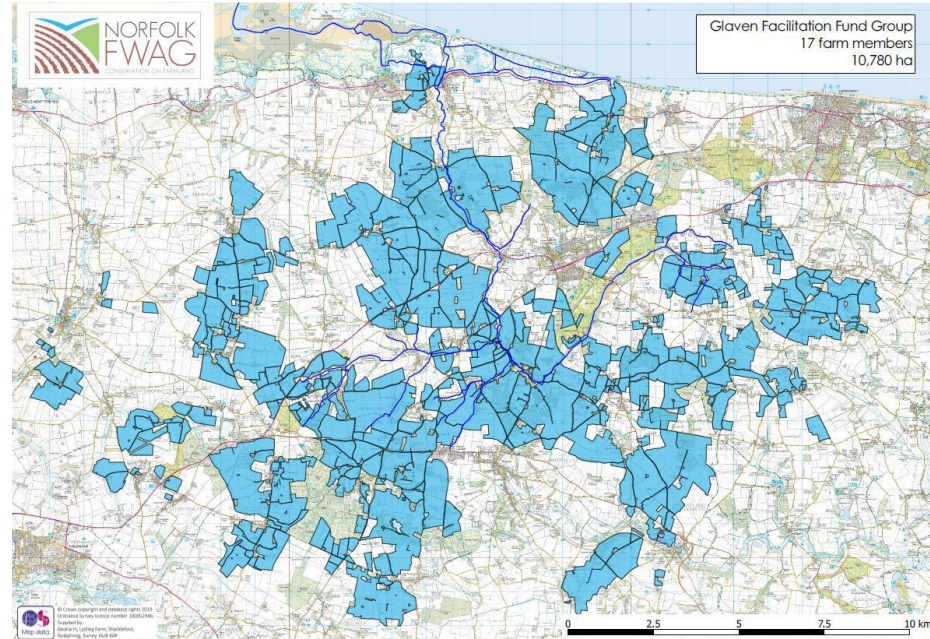
Funded by
the European Union





Countryside Stewardship Facilitation Fund

- Originally funded under the CAP
- Aim: to achieve joined-up action through agri-environment-climate schemes across specific areas
- Provides funding for organisations to bring individual farmers, foresters and other land managers together to:
 - work cooperatively
 - to maximise the scheme's impact on the local environment,
 - by bringing larger land areas under active management.
- Findings from evaluations so far:
 - significant benefits in facilitating knowledge exchange between farmers leading to increased engagement with environmental activities,
 - data are not yet available to demonstrate impact on biodiversity





Landscape Recovery Scheme

- Part of new Environmental Land Management framework (successor to CAP)
- Long-term public funding - 20 years or more
- To deliver outcomes that require collaborative action across a significant area, e.g.
 - restoring ecological or hydrological function across a landscape
- Agreements are:
 - bespoke for the area
 - allow for new approaches to be tested
- Intention is that projects could attract private finance to co-fund the public funding provided.
- 56 projects so far – 22 approved in 2022 / 34 in 2023



