



EU CAP Network Workshop 'Women-led innovations in agriculture and rural areas'

Krakow, Poland
17-18 April 2024



Funded by
the European Union



EU research and innovation by and for rural women

Arianna Pasa
Research Programme Officer, F.2 Research and Innovation
European Commission, DG Agriculture and rural development

Content

- › 1. Gender equality in Horizon Europe
- › 2. Why research and innovation by and for rural women ?
- › 3. Meet the projects

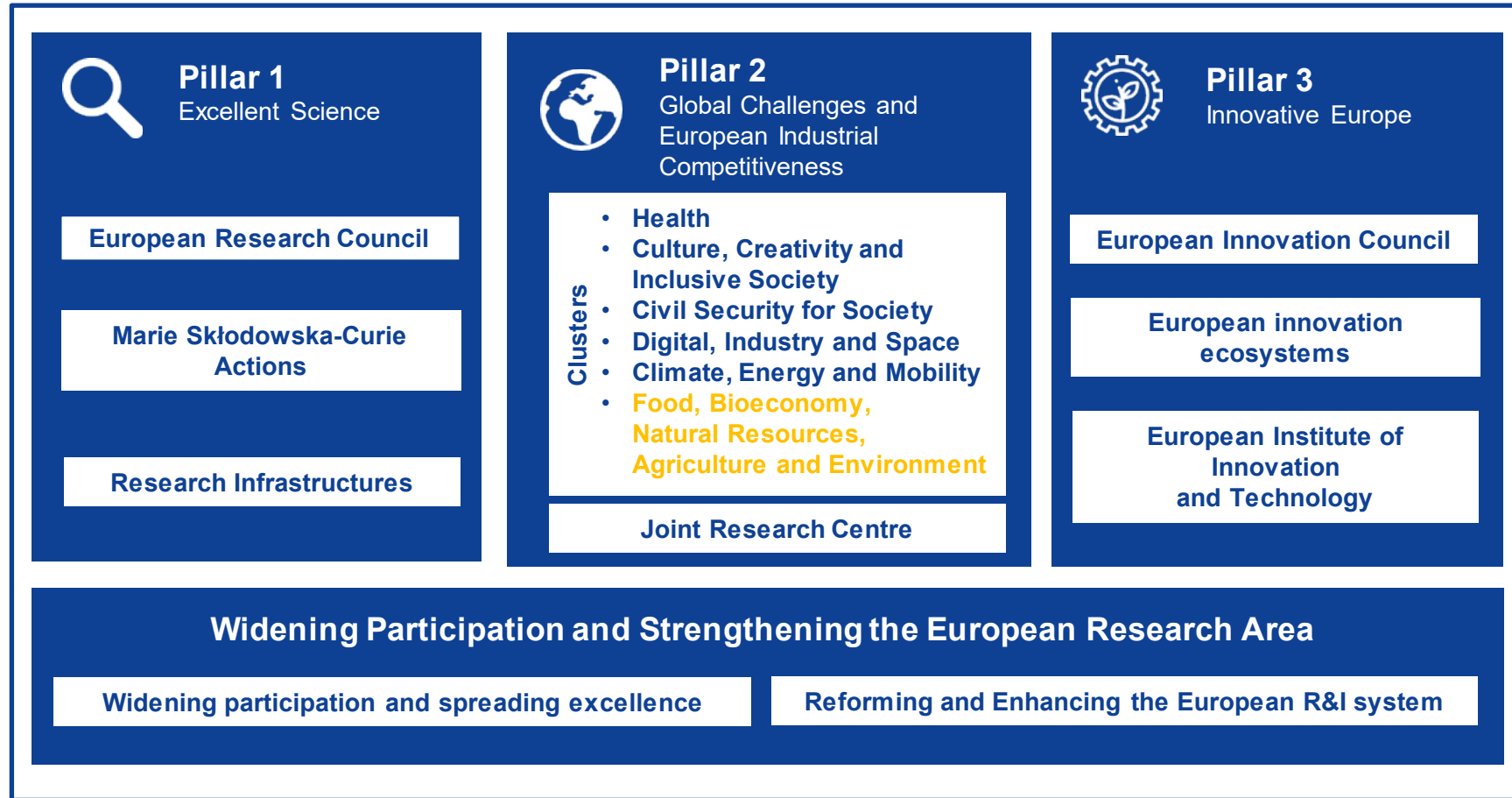


Gender equality in Horizon Europe





Horizon Europe: structure & resources



EUR 9 billion under Horizon Europe for Cluster 6 “Food, Bioeconomy, Natural Resources, Agriculture and Environment”



Gender equality in Horizon Europe

- › It is part of the European Commission Gender Equality Strategy 2020-2025
- › Objectives:
 - › **improve** the European research and innovation system;
 - › create **gender-equal working environments** where all talents can thrive;
 - › better **integrate the gender dimension in projects** to improve research quality as well as the relevance to society of the knowledge, technologies and innovations produced.



How gender equality is addressed in Horizon Europe?

1. **Gender Equality Plan (GEP):** eligibility criterion for certain categories of legal entities from EU countries and non-EU countries associated to Horizon Europe
2. Increasing **gender balance** throughout the programme, with a target of 50% women in Horizon Europe related boards, expert groups and evaluation committees, and gender balance among research teams set as a ranking criterion for proposals with the same score
3. Through dedicated **calls for proposals**
4. The **integration of a gender dimension into research and innovation content is a requirement by default**, and evaluated under the excellence criterion, unless the topic description explicitly specifies otherwise



Why is it important to include a gender and/or sex analysis in research and innovation?

- › adds value to research and innovation in terms of **excellence, creativity, and business opportunities**;
- › helps researchers and innovators **question gender norms and stereotypes**, and rethink standards and reference models;
- › leads to an **in-depth understanding of diverse gender needs, behaviours, and attitudes**;
- › contributes to the production of **goods and services better suited to society and new markets**
- › **addresses the diverse needs** of the citizens of the European Union
- › is crucial to secure Europe's leadership in science and technology, and support its **inclusive growth**



Why research and innovation by and for rural women?



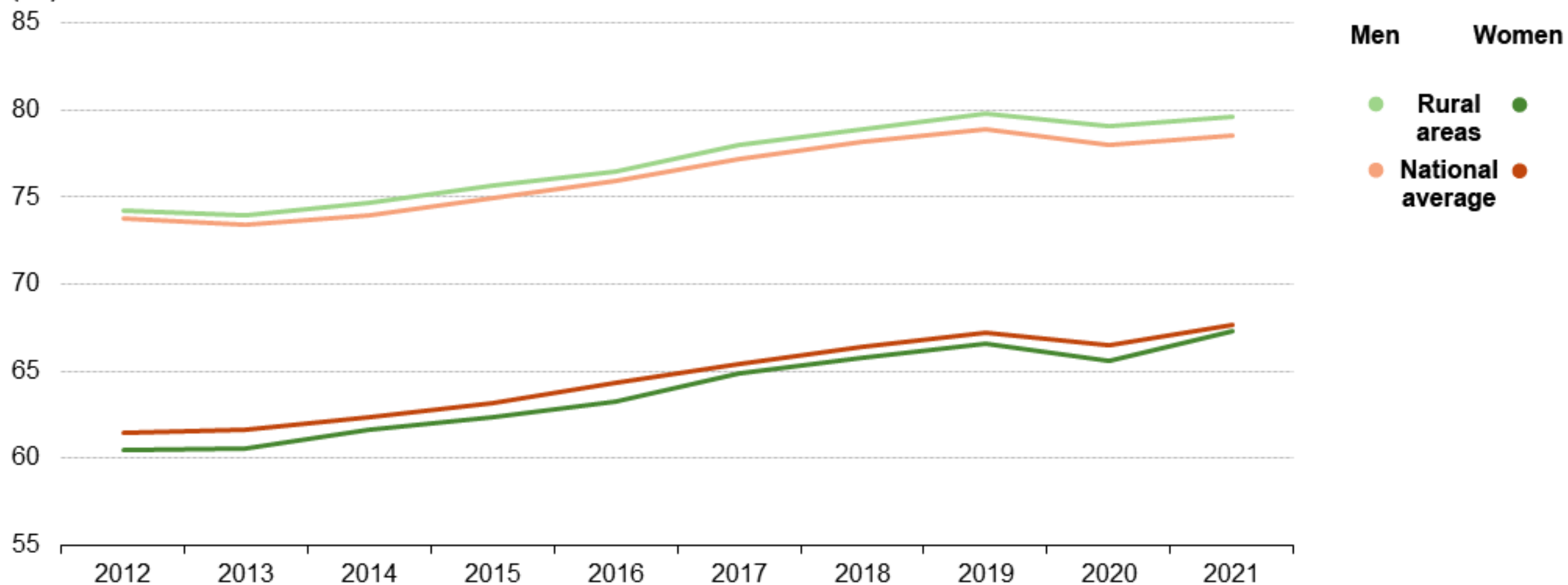
Women challenges in agriculture and rural areas

- › **Less than 30% of EU's farm managers** are women **and their farms are smaller** than of their male counterparts;
- › Women are **more likely than men to work in the informal economy and on part time basis**, however, their participation through the informal rural economy is not statistically recognized;
- › **Rural women have lower income than rural men** in all EU Member States;
- › Due to the structural deficiencies of local labour markets, **women** (mostly highly-qualified) **outmigrate from rural areas** at a higher rate than men;
- › Some rural areas **lack infrastructure (physical and digital), provisions of social support services is limited.**



Employment rate (20–64 years) by sex, EU, 2012–2021

(%)

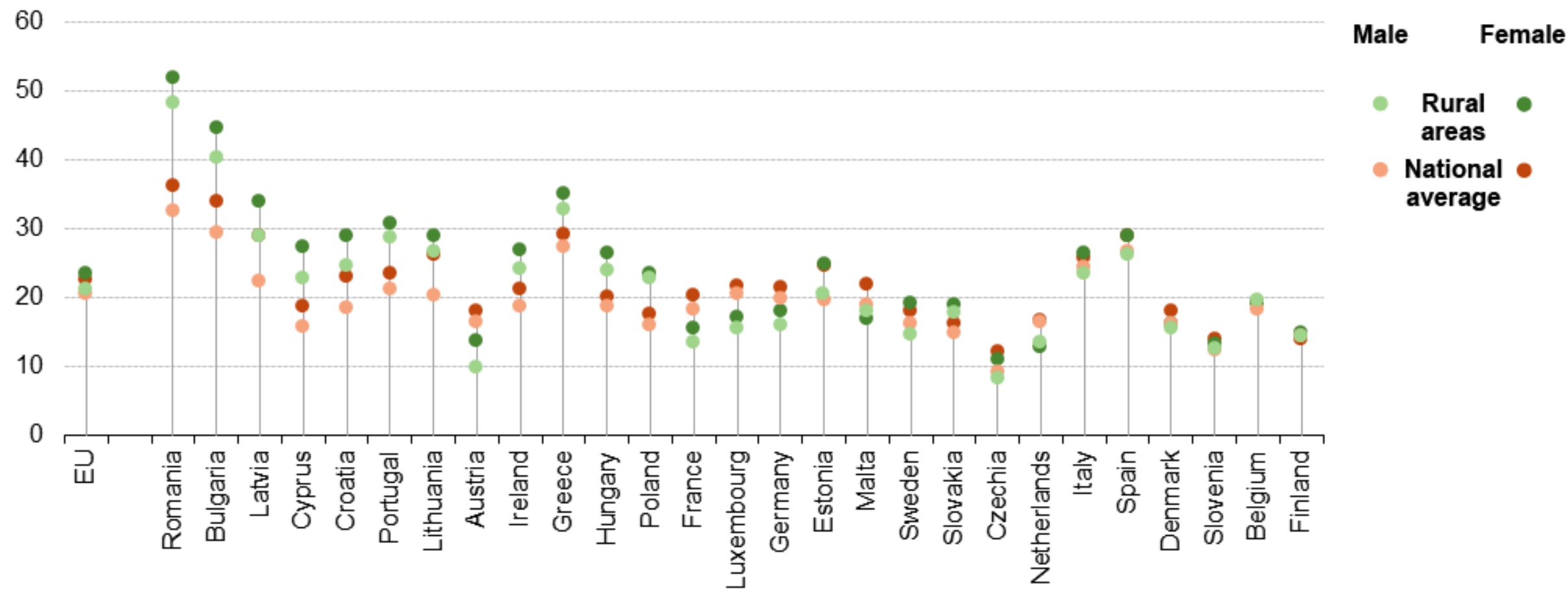


Note: the y-axis has been cut to focus on the interval 55–85 %. Due to a break in series, data for 2021 are not fully comparable with the previous years.

Source: Eurostat (online data code: lfst_r_ergau)

People at risk of poverty or social exclusion by sex, 2021

(%)



Note: ranked on differences by sex (from the largest to smallest range).

Source: Eurostat (EU-SILC)

Commission's action against women inequalities in agriculture and rural areas

- › For the first time in the history of **CAP – specific objective number 8** that refers explicitly to women by promoting gender equality, including the participation of women in farming.
- › **Long Term Vision of Rural Areas** -> Rural action plan flagship on **social resilience and women in rural areas**.
- › **CAP funds, European Social Fund+, the European Regional Development Fund and Recovery and Resilience Facility** support:
 - › Investments into infrastructure and services – enablers of social inclusion of women;
 - › Provision of incentives for local employment opportunities for women;
 - › Enhanced support and incentives for female farmers,
 - › Improving the access to loans for women for entrepreneurial activities;
 - › Empowering women in decision making
- › **Horizon Europe** funds dedicated research and innovation projects



Commission's action against women inequalities in agriculture and rural areas

- › Enhanced monitoring of gender equality implementation - gender budgeting - a methodology to measure the relevant expenditure at programme level in the Multiannual Financial Framework 2021-2027.
- › **Mainstreaming of the needs of women in agriculture and rural areas into the various relevant Commission's files** including regional policy, social policy, demography and ageing policy, energy policy, educational policy, etc.





Meet the projects



Projects working on women-led innovation in agriculture and rural areas (19 M euro)



Female-Led Innovation in Agriculture and Rural Areas focuses on a transdisciplinary methodology to improve awareness and recognition around women’s role and practices in farming and rural areas. The project focuses on increasing gender consciousness of women in rural economies and development.



Gender Equality in Rural and Agricultural Innovation System the objective is to empower rural women and increase the number of socio-ecological women-led innovations in agriculture and in rural economy. The project will establish living labs for rural women innovators and contribute to transform gender norms and stereotypes by sharing and capturing insights on policy and practical experience.



Supporting Women-led Innovations in Farming and rural Territories project will provide new insights and co-create novel approaches to advance gender equality in farming and rural areas. The project will provide theoretical and practical tools, such as gender-responsive budgeting and feminist farm viability indicators, to enable a changes towards more just, effective and diversified farming



Enhancing social innovation in rural areas and Social Economy for Resilience, Inclusion and Good life in Rural areas projects will work on social inclusion and social economy in rural areas. These will include research and innovation activities with women in a vulnerable situation.



Thank you!



EU CAP Network Workshop 'Women-led innovations in agriculture and rural areas'

17-18 April 2024
Krakow, Poland

All information on the workshop is available on the event webpage:

<https://eu-cap-network.ec.europa.eu/events/eu-cap-network-workshop-women-led-innovations-agriculture-and-rural-areas>

