



# **Integrated Territorial Investments supporting the rural communities on Danube Delta area**

**EU CAP Network Workshop on LEADER and multi-funded CLLD**

Ljubliana, Slovenia – 18 - 19 October 2023

# INTEGRATED TERRITORIAL INVESTMENTS

- ❑ A flexible mechanism for formulating integrated responses to various territorial needs.
- ❑ Not a secondary operation within an OP.
- ❑ ITI allows the implementation of some OPs at an intersectorial level.
- ❑ ITI allows funding from several priority axes of one or more OPs.
- ❑ Intensive cross-cutting dialogue between stakeholders
- ❑ ITI cannot be used in the absence of an integrated territorial strategy.



# INTEGRATED TERRITORIAL INVESTMENTS - BENEFITS

- ❑ Tool designed for a **field-based approach** to development.
- ❑ The certainty of a **specific allocation** for realization of investments / projects that contribute to the achievement of the integrated strategy's objectives.
- ❑ Increasing the **efficiency of funds using**, due to an increased potential for correlation of the proposed projects (synergistic effects) and obtaining superior results.
- ❑ Ensuring the **involvement and accountability of actors** at the local, regional and sub-regional level.
- ❑ Stimulating the **correlation of interventions** at different territorial scales and inter-sectoral coordination.
- ❑ **Increasing local administrative capacity**, due to the need for involvement in ITI management.
- ❑ Through the implementation of ITI, the less used potential at the local, urban and regional level is exploited.



## INTEGRATED TERRITORIAL INVESTMENTS FOR DANUBE DELTA

- ✓ Integrated development strategy - approved by GD no. 602 / 2016
- ✓ Designed territory - specific features
- ✓ Mainly rural communities - 33 (29 on Tulcea, 4 on Constanta county territories)
- ✓ Establishment of AID ITI DD - NGO, legal entity under private law, **with public utility status**
- ✓ Action plan - revision 2021 - 2022
- ✓ Governance mechanisms - national revision 2023
- ✓ Dedicated allocation through different OP / NP 2014 - 2020
- ✓ Solving the territorial needs
- ✓ Involving the communities
- ✓ Supporting local beneficiaries to develop new businesses - funds for private and public entities
- ✓ 5 LAGs on ITI DD - beneficiaries of Leader funds / NPRD 2014 - 2020



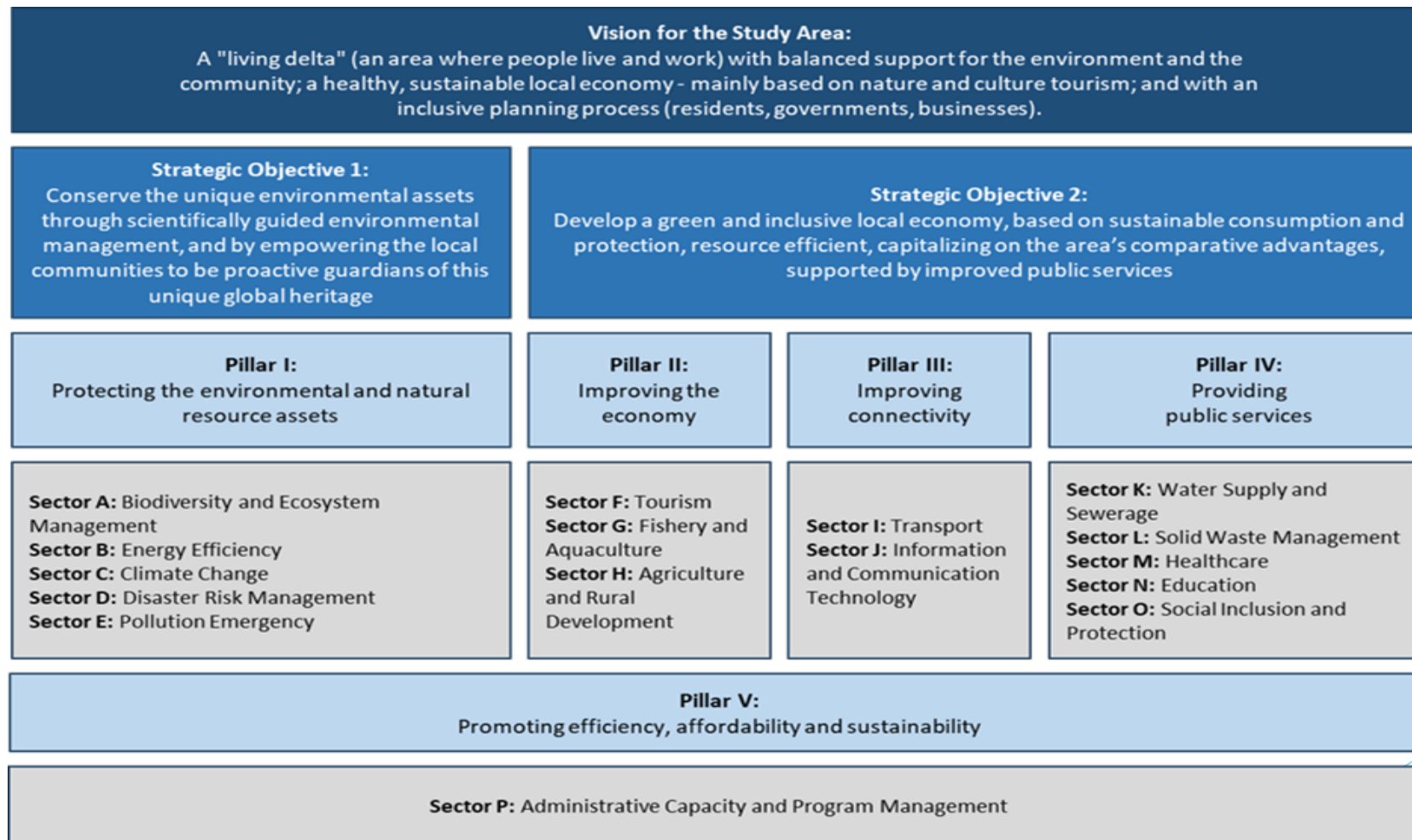
# ITI DANUBE DELTA

A TERRITORY WHICH PROVIDES  
SPECIFIC DEVELOPMENT OPPORTUNITIES,  
ENSURING THAT THE OBJECTIVES OF PRESERVING  
THE ENVIRONMENT AND NATURAL RESOURCES ARE MET,  
WITH THE FINAL AIM OF  
INCREASING THE QUALITY OF LIFE FOR THE LOCAL PEOPLE



# VISION, STRATEGICAL OBJECTIVES, PILLARS and SECTORS

## of *THE INTEGRATED STRATEGY FOR THE SUSTAINABLE DEVELOPMENT OF DANUBE DELTA*

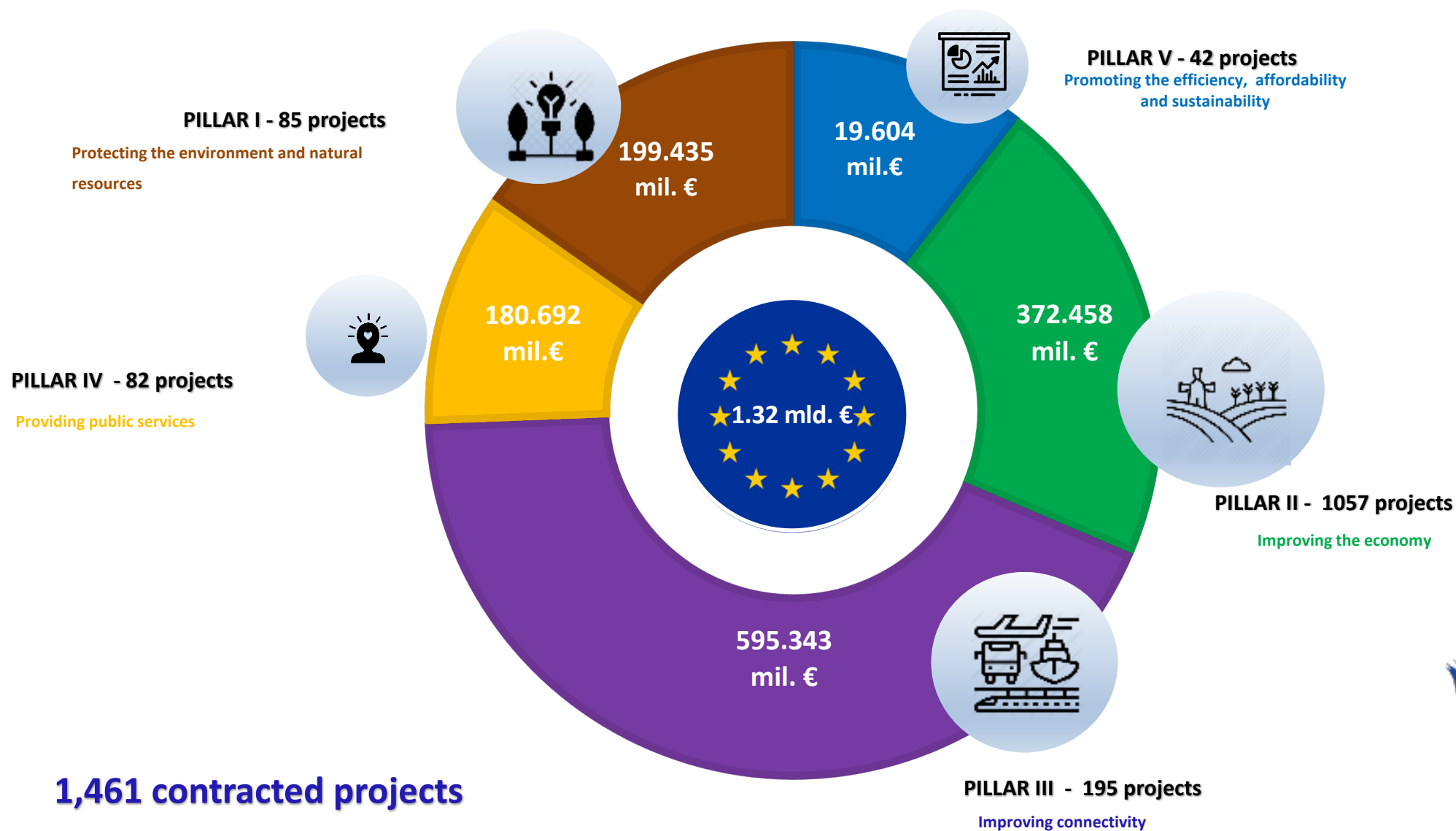


Source: World Bank Report on the analysis of a local development strategy: Danube Delta Integrated Sustainable Development Strategy, 2020





# MANAGING THE ALLOCATION OF OVER 1.3 BIL € FOR ITI DANUBE DELTA, BY PILLARS AND DOMAINS



# INDICATIVE ALLOCATIONS AND CONTRACTED PROJECTS ON ITI DD (June 2023)



## SITUATION OF ITI DD ALLOCATIONS AND PROJECTS (2014 - 2020)

Nr. crt.	Program	Indicative ITI Allocation EURO (FESI+BS)	Allocation by calls (ESI+SB)	Submitted projects	Submitted projects value (ESI+SB) RON&€	Submitted projects %	Contracted projects	Value of contracted projects (ESI+SB)	Contracted projects %
1	OP	462,991,988.14 €	2,964,254,576.70 lei	589	3,191,757,534.22 lei	139%	449	2,429,121,320.73 lei	106%
2	EBIOP	479,576,470.57 €	447,997,058.00 €	55	3,738,926,614.11 lei	157%	42	3,116,842,869.48 lei	131%
3	FMOP	49,333,334.00 €	45,823,627.16 €	145	263,845,246.60 lei	108%	118	188,826,269.37 lei	77%
4	ACP	18,080,000.00 €	51,755,000.00 lei	44	71,531,508.01 lei	80%	40	69,896,488.75 lei	78%
5	COP	69,000,000.00 €	92,197,878.33 lei	23	167,687,544.57 lei	49%	13	103,143,103.80 lei	30%
6	HROP	67,800,000.00 €	360,143,330.95 lei	53	360,143,330.95 lei	107%	26	118,780,635.37 lei	35%
7	TAOP	5,903,529.00 €	27,156,233.00 lei	2	27,399,309.06 lei	94%	2	27,399,309.07 lei	94%
8	<b>NPRD</b>	<b>168,000,000.00 €</b>	<b>178,377,041.00 €</b>	<b>1,492</b>	<b>290,780,023.00 €</b>	<b>173%</b>	<b>837</b>	<b>177,851,905.52 €</b>	<b>106%</b>
<b>TOTAL EURO</b>		<b>1,320,685,321.71 €</b>	<b>1,376,511,048.54 €</b>	<b>2,403</b>	<b>1,866,700,048.69 €</b>	<b>141%</b>	<b>1,527</b>	<b>1,397,680,637.45 €</b>	<b>106%</b>

1,527 projects, of which 66 resiliated



# ITI SUPPORTING THE RURAL COMMUNITIES ON ITI DD AREA

- ❑ **2014 – 2020 – Specific allocation** for investments / projects that contribute to agriculture and development of rural areas – **168 mil. €**
- ❑ 2014 – 2020 vs. 2007 – 2013 - Increasing the **efficiency of funds for rural areas** using the specific allocation through NPRD – **300%**
- ❑ Ensuring the **involvement of actors** at the local level – public and private beneficiaries, communes and LAGs - **5 Local Action Groups on ITI DD**
- ❑ **Specific allocation for LAGs on ITI DD – 12.9 mil. €**
- ❑ Stimulating the **correlation of interventions** at different local scales.
- ❑ **Increasing local administrative capacity** - involvement in ITI management, within a Director Committee and a Consultative body
- ❑ Through the implementation of ITI, the less used potential at ITI DD rural level is exploited.



# MAP of LAGs / 2014 - 2020 LEADER ON ITI Danube Delta



### Social day center- SARICHIOI

#### *1<sup>st</sup> PROJECT*

- ▶ *Local development strategy LAG RAZIM - M7 / 6B - Leader*
- ▶ *Applicant - TAU SARICHIOI*
- ▶ *Total eligible value - 88,517 €*
- ▶ *Construction of a building of a total area of 149 sqm, including an activity room, consultation room, treatment room, etc ...*
- ▶ *Implementation: 4 Nov 2019 - 8 Nov 2022*

#### *2<sup>nd</sup> PROJECT*

- ▶ *CLLD - HROP, PA 5, 5.2 component „Reducing the number of people in risk of poverty and social exclusion from marginalized communities in rural areas and cities with a population of up to 20,000 inhabitants ...”*
- ▶ *Partnership - TAU SARICHIOI = leader and LAG = partner*
- ▶ *Total eligible value - 1 mil. €*
- ▶ *Improving life quality for at least 250 people in Sarichioi Commune, Tulcea County*
- ▶ *Implementation: 1 April 2021 - 31 Dec 2022*



# Example of a project on LAG RAZIM

## Social day center- SARICHIOI



# ITI SUPPORTING THE RURAL COMMUNITIES - LESSONS LEARNT / THEORETICAL & PRACTICAL APPROACH

- ❑ ITI can offer immediate added value in programming.
- ❑ ITI increase the role of local authorities, NGOs and other subnational **bodies** involved in managing and implementing ESI funds – for longer terms, ITI help to **widen capacities** for conducting territorial development.
- ❑ **More efficient implementation of territorial strategies** by improving coordination between ESI funds.
- ❑ ITI develop the coordination with other local, regional and national strategies – introducing a multilevel governance system.
- ❑ ITI **promote territorial dialogue**.
- ❑ ITI **promote partnerships** with territorial development stakeholders.
- ❑ ITI bring / (should bring?) the idea of **flexibility**.
- ❑ ITI encourage more **effective management and implementation of public policies**.



# ITI SUPPORTING THE RURAL COMMUNITIES - CURRENT SITUATION

- ❑ 2014 - 2020 - Specific allocation by NPRD / LEADER, but no possibility for multi-funded projects
  - ❑ 2021 -2027 .....
- 4 ITIs microregions in Romania mentioned in the MS's Agreement
- No specific allocation through SP for CAP 2023 – 2027 for ITIs, either within LEADER measure
- No specific allocation for CLLD on ITI DD rural area (through ISDOP, P2)
- Some possibilities for multi-funded projects, such as *social infrastructures for specific target – groups* (children), with LAGs as beneficiaries.





# ITI SUPPORTING THE RURAL COMMUNITIES - PROPOSALS

- ❑ **More ITIs microregions** – challenges, political pressure, external elements
- ❑ Ensuring that the strategies do not become a ‘wish list’ of different activities, particularly when there are limited resources.
- ❑ Rules / procedures should be made **clearer, simpler** and **less rigid**.
- ❑ Rural development – should not be separated out under the new proposals – risk on the scope for integration of funds under CLLD, but also under ITI.
- ❑ **Dedicated funding** for ITI rural areas, after 2027 – a vital element and the key incentive for cooperation on a specific territory.

Solving specific needs

Different funds

Channelling funding to rural areas

Multi-funded projects

- ❑ Indicative allocation for CLLD on ITI rural area



ASSOCIATION  
FOR INTERCOMMUNITARY DEVELOPMENT -  
ITI Danube Delta (ADI ITI DD)

**Thank you for your attention!**

Email:

[office@itideltadunarii.com](mailto:office@itideltadunarii.com)  
[roxana.iacob@itideltadunarii.com](mailto:roxana.iacob@itideltadunarii.com)

[www.itideltadunarii.com](http://www.itideltadunarii.com)  
[www.facebook.com/itideltadunarii](https://www.facebook.com/itideltadunarii)