



EXPERIENCE WITH MULTIFUNDED CLLD IN THE CZECH REPUBLIC

JAN DRAZSKY FLORIAN

NATIONAL LAG NETWORK OF THE CZECH REPUBLIC, VICE-CHAIRMAN

LAG ČESKÝ ZÁPAD, LAG MANAGER

18 OCTOBER 2023, LJUBLJANA

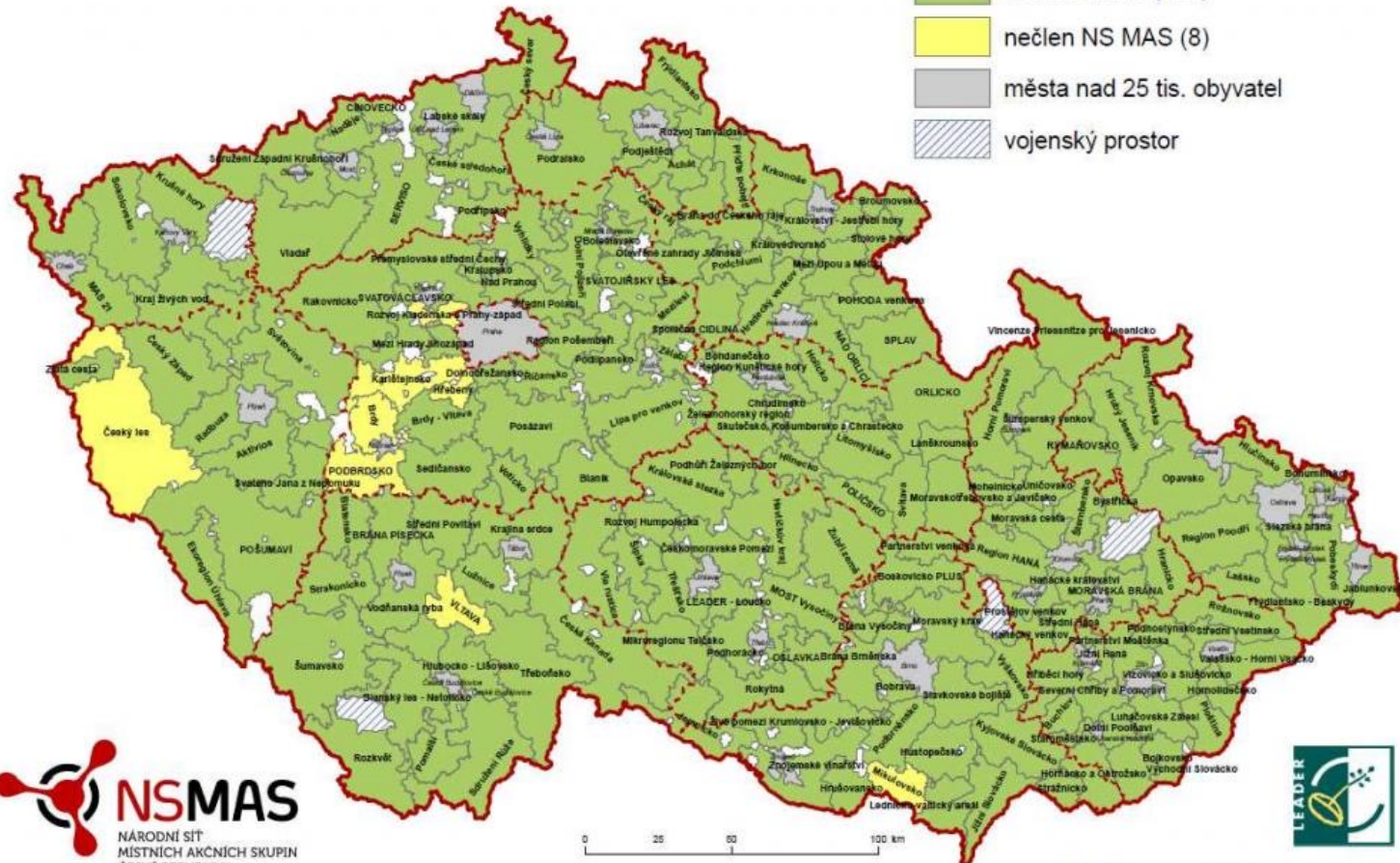
THE MAIN INGREDIENTS OF OUR SUCCESS

LAG coverage & strong National LAG Network

MÍSTNÍ AKČNÍ SKUPINY

MAS na území ČR k 1. 5. 2023 (180)

- člen NS MAS (172)
- nečlen NS MAS (8)
- města nad 25 tis. obyvatel
- vojenský prostor



Názvy MAS byly pro potřebu vizualizace zkráceny či upraveny.

Mutual trust, partnership & close cooperation.

- **Good interpersonal relationships**
- **CLLD Platform** – meets regularly about 10x year
- **Permanent workgroups on each MA**
include National LAG Network representative
- **Operational consultations** – each MA has a partner contact person in National LAG Network
- **Open-door** at high level representatives on both sides

United in Diversity.

- **Coordination, not direction.**
- **LAG-Standards** introduced and controlled by Ministry of Regional Development
- **Shared methodology** with the possibility to choose separate implementation method for MSs
- **Using the best of each fund** and it's implementation routine

MULTIFUNDED CLLD FROM LAG PERSPECTIVE

LAG Český Západ

- average-size LAG
 - 38 communities
 - 30 000 inhabitants
 - 750 square km
 - 80 members
- est. 2004
- 10 employees
 - 7-8 FTE
 - about 50% CLLD



Multifunded CLLD in LAG Český Západ

- **1 CLLD-strategy covering most of the topics**
also those not funded by EU funds
- **4 Programme Frameworks = 4 OP = 3 Funds**
= 4 different approaches
- **30 Calls > 160+ Projects selected**
- **Multifunded Strategy**
not Multifunded Projects

CLLD Budget of LAG Český Západ

	2014-2020				2021-2027	
FUND	OP	calls	projects	EUR mio.	OP	EUR mio.
EAFRD	RDP	13	130+	1,95	CAP SP	1,43
ERDF	IROP	10	21	1,62	IROP	1,59
	OP ENV	2	3	0,22	OP ENV	-
	-	-	-	-	OP TAK	0,08+
ESF/ESF+	OP EMPL	5	6	0,56	OP EMPL+	0,61
TOTAL		30	160+	4,35		3,71
LAG running costs	IROP 95%			0,60	OP TA 95%	0,59

THANK YOU FOR YOUR ATTENTION

Jan Florian

místopředseda NS MAS ČR a vedoucí PS LEADER

e j.florian@nsmascr.cz

t +420 77 44 99 396

