



**Workshop
'Animal welfare and innovation'**

Hanover, Germany
9-11 May 2023



Funded by
the European Union



The use of the Welfare Quality protocol as implemented by the WelFair certification: Indicators and monitoring methods for practical use on the farm

Antoni Dalmau Bueno
Institute of AgriFood Research and Technology (IRTA)

What is animal welfare?

Dr. Antoni Dalmau

antoni.dalmau@irta.es



What is animal welfare?

- It is when I'm taking care of animals
- It is how I'm treating animals
- It is what I'm giving to the animals
- It is where I'm rearing the animals
- It is what I'm doing with the animals



What is animal welfare?

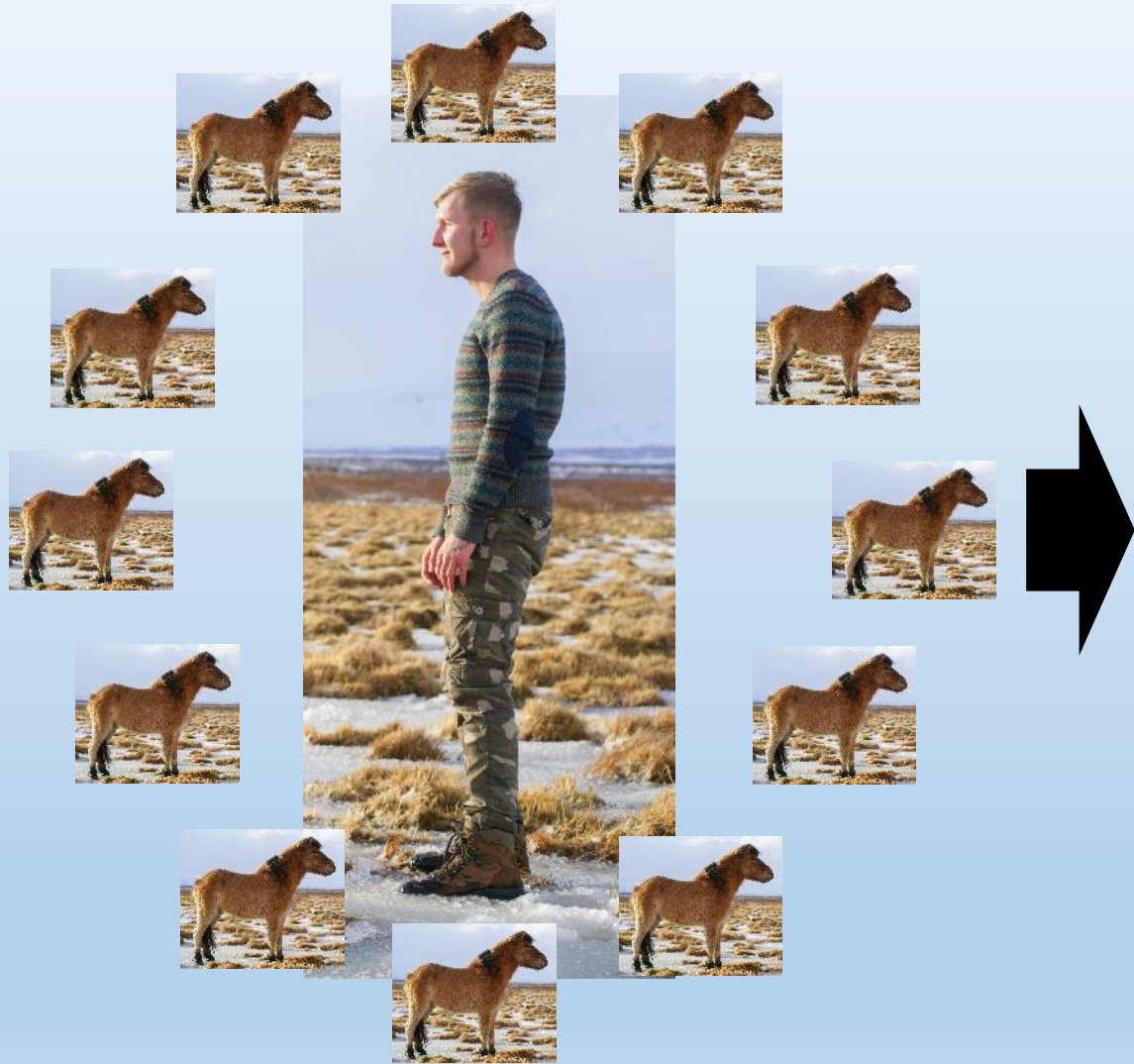
But, this is not about you

- It is when I'm taking care of animals
- It is how I'm treating animals
- It is what I'm giving to the animals
- It is where I'm rearing the animals
- It is what I'm doing with the animals

This is about them



Anthropocentric




Environment/Management



New EU view



Animal based indicators

A close-up photograph of a human eye. The iris is replaced by a vibrant rainbow spectrum of colors, with each color appearing as a textured, shimmering band. The pupil is visible in the center, and the surrounding skin and eyelashes are in soft focus.

We need
another
approach

Why we can ensure animal welfare but not human well-being?



We need to focus on the animal

The Five Freedoms?

Thirst and
hunger

Thermal and
physical
discomfort

Fear and
distress

Pain,
discomfort

To express
normal



**Animal welfare is something more than
just absence of pain and fear**

Principles	Criteria
Good Feeding	Absence of prolonged hunger
	Absence of prolonged thirst
Good housing	Comfort around resting
	Thermal comfort
	Ease of movement
Good health	Absence of injuries
	Absence of diseases
	Absence of pain induced by management
Appropriate behaviour	Social behaviour
	Other behaviours
	Humane-animal relationship
	Positive emotional state





In total more than 20 millions of euros that included the identification and validation of measures, and the implementation of animal-based protocols to assess animal welfare



AND YES, THEY ARE BEING USED IN ANIMAL WELFARE CERTIFICATION SCHEMES





antoni.dalmau@irta.es

You can not certify something that you are not assessing

-
- Because it is fair to accept that animal welfare belongs to animals and should be assessed by means of animal-based indicators.
 - It is possible to combine a classification of production systems with an animal welfare certification focused on animal-based indicators?

EU CAP Network workshop 'Animal welfare and innovation'

9-11 May 2023
Hanover, Germany

All information on the workshop is available on the event webpage:

https://eu-cap-network.ec.europa.eu/events/eu-cap-network-workshop-animal-welfare-and-innovation_en

