



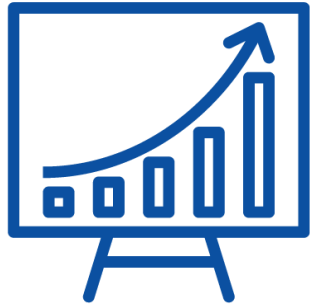
First look at LEADER intervention in CAP Plans 2023-27

Smarter, younger and simpler LEADER?

(photos: ENRD website)

Iwona LISZTWAN, Unit B.3

First look at LEADER in the CAP Plans 2023-27:



Key figures



Objective(s)
Content
Areas of
support
Intangibles and
added value



Full LEADER
method for all
LAGs



Simplification

Key figures: LEADER in CAP Plans 2023-27

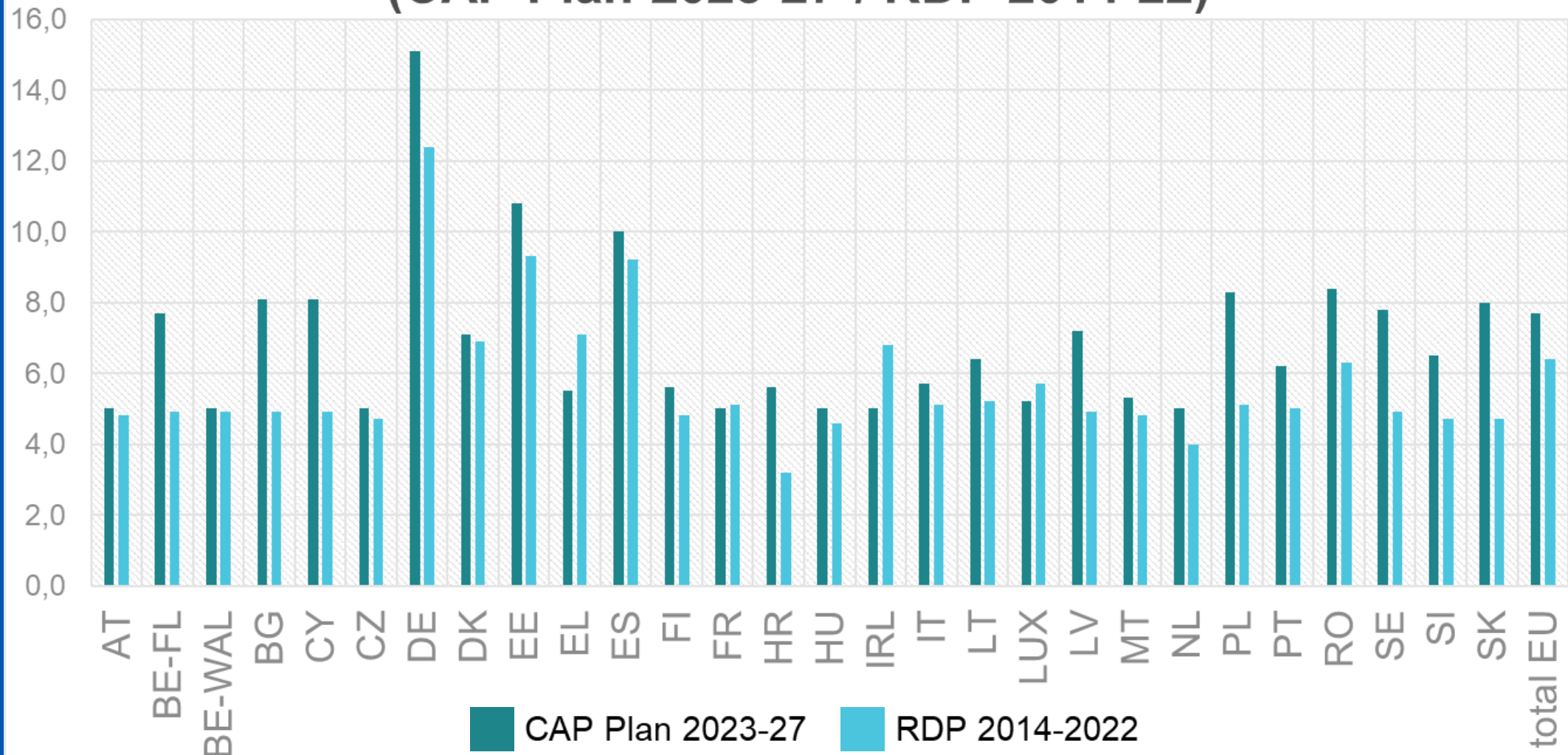
7,7%
Of EAFRD

2,678
LDS
To be supported

5 billion
EUR
Of EAFRD

65%
Rural population
in EU to be
covered by
LEADER

LEADER allocation as % of EAFRD (CAP Plan 2023-27 / RDP 2014-22)



Public resources per Local Development Strategy 2023-27



Average cost per output: 1.5 – 2,5 million EUR public support

Variation from less than 1 million EUR in EL and PT to above 5 million EUR in IE, some regions of FR, IT, ES and DE

Limited resources, hence:

- focus of smaller projects (typically up to 200,000 EUR or less);
- focus on areas with highest added value from LEADER approach whilst really
- prioritising key local needs.

Areas of LEADER intervention (1)

- Initial programmed mostly under Objective 8 but also other horizontal and specific objectives
- The corresponding actual targeting of LDS varies
- **Clear targeting** on areas with added value (PL, IRL, RO, AT, SK, FI, IT, LV, DK, EL, BE FL, CY, MT)
- Mixed – « **looser** » targeting (CZ, HU, HR, SE, LT, EE, BE WAL, SV, ES)
- Targeting **by exclusions** (BG, DE, MT)
- **No explicit targeting** (FR, PT, NL, LUX) – fully open
- Bottom-up – the actual results and areas for support will come out from the LDS's once selected



Areas of LEADER Intervention (2)



© Popoi Kitchen

Diversification of economic activities

PL, IR, CZ, RO, HU, HR, AT, BG, PT, SK, SE, IT, LT, LV, EE, EL, SV, CY, BE WAL.



Short value chains

Local food production

PL, IRL, CZ, RO, HU, HR, AT, PT, SK, IT, LV, EL, CY, BE WAL, BE FL.



Rural services

Small infrastructure

PL, IRL, CZ, RO, HU, HR, BG, SK, SE, FI, IT, LT, LV, EE, DK, EL, SV, CY, BE FL



Social inclusion

Social innovation

RO, BG, SE, IT, EE, SV, SK, LV, IRL, HU, AT, SK, PL

Areas of LEADER Intervention (3)



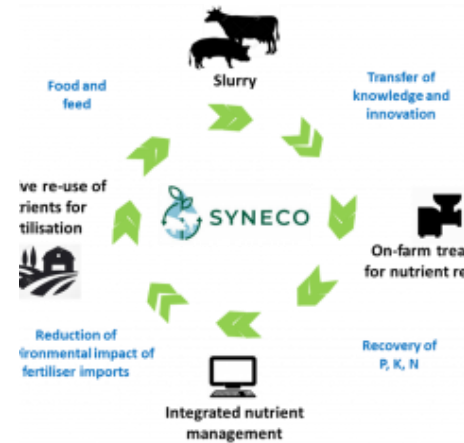
Cultural, social and community life

SK, SE, FI, IT, LT,
DK, CY, BE WAL.



Climate change mitigation and environment, inc renewable energy

IRL, RO, HU, HR, AT,
SK, SE, FI, IT, EE,
DK, SV, BE FL.



Green economy, circular, bioeconomy

IRL, RO, AT, PT, SE,
IT, LT, EE, DK, EL,
SV, CY, BE FL



Heritage

CZ, RO, HU, AT, EL,
BE WAL

Areas of LEADER intervention (4): Smart Villages



The majority of Member States explicitly plan to support Smart Village approaches (PL, IRL, CZ, RO, HU, HR, AT, SE, FI, IT, LV, EE, EL, BE FI, CY, LUX, SL)

yet not always clear how (preparation/implementation).



Areas of LEADER Intervention (5): some interesting examples from CAP Plans



Farms

Caring farms (PL),
Educational (PL)
Small experiments (FI)
Collective investments
(RO, BG)



Rural youth

IRL (explicit key
theme)
Simplified youth
tickets (LV)
Empowering rural
leaders of the future
(EE)



Digital transition

Regional learning and
participation (AT)
Training in basic
digital skills



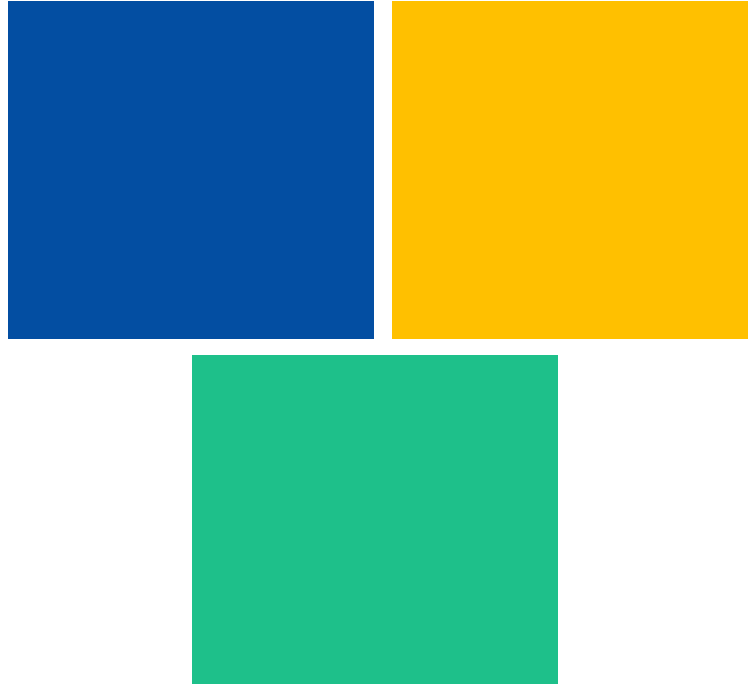
Diversification

Simplified rural ticket
(LV)

Scope and added value : Intangible(s)

Social capital

- Mobilisation of local actors
- Public-private partnership
- Learning to work together
- Energize local community life
- Build trust
- Produce collective goods



LEADER projects results and qualities

- Projects better matching local needs and unique resources
- Innovation
- Cooperation with other territories

Local governance

- Local capacity building and animation
- Empowerment of local communities
- Build resilience
- Learn and take transparent decisions
- Better match with local needs
- Communicate EU and funding



The basis for **all** LAGs:
full LEADER method

- ✓ **Inclusive local private-public partnership with no interest in control**
- ✓ **Area based** – at a subregional level
- ✓ **Innovation at the local level** – broadly defined but present
- ✓ **A local strategy first** – projects follow, for real impact
- ✓ **Bottom up approach** – led by local action groups (functions of LDS)
- ✓ **Networking** – at regional, national and EU level
- ✓ **Cooperation** – joint projects between LAGs between regions, in the EU and beyond

Inclusive partnership: women and young people in the LAGs decision bodies (1)



At the moment no data at LAGs level – but it will be collected

Working in LEADER structures is not the same as having decision powers

Unwilling to participate in decisions or implicitly excluded by « glass »?

Cultures, perceptions, esp. in more conservative rural societies

Ageing population, depopulation – impacts (?)

Formal obstacles: in some MS members of decision bodies are directors of organisations/mayors (in these functions women could be underrepresented)

Empowerment, awareness building, monitoring are essential – sometimes positive discrimination





Women and young people in LAG's decision bodies – “ CAP Plans (2)

Explicit reference to (some) participation of women in LAG's decision making bodies (IRL, HU, HR, AT, BG, SK, NL, LV, EL, MT, DE, some regions of ES)

Explicit reference to (some) participation of young people (PL, IRL, RO, HU, BG, SK, NL, LV, EL, MT, DE, some regions of ES)

AT and CZ planning actions if these groups are not adequately represented.

Territorial approach: Subregional level “

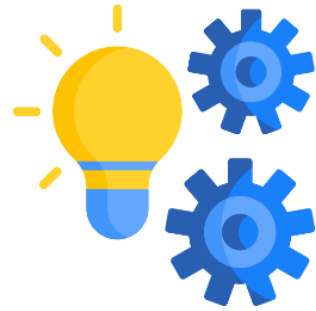


Generally wide population criteria: up to 100,000; 150,000 or even 200,000 (IT) or 250,000 people (NL) or no upper ceiling (even in less densely populated MS)

Functional, cultural, social geographical or economic coherence of an area largely absent as condition (only RO, AT), perhaps in selection criteria

Size: enough? - single municipalities (BG, and LT)

Real picture will be clear after the selection of LDS



Innovation (1)



Part and parcel of LEADER approach

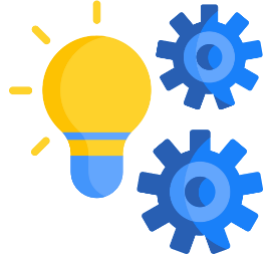
Needs to be present in each LAG (eg, in the types of projects, selection criteria, cooperation with research/innovation communities, social/administrative solutions etc)



Wide definition to be given by the Member States/regions



© Clare Local Development

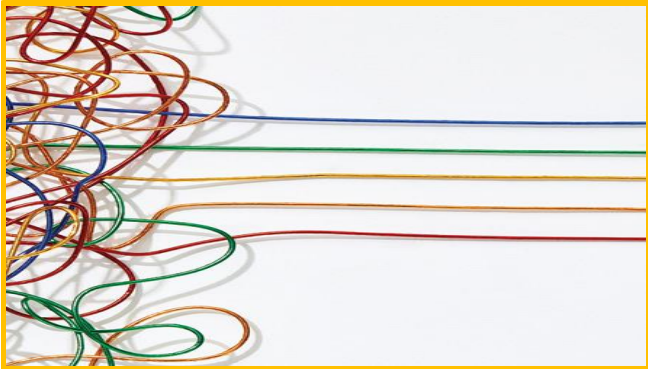


Innovation (2)



Example from Latvia CAP Plan:

“Innovation is one of the key elements of the LEADER approach. (...) LAGs need to include in their LDS a description of the innovative solutions and use it as a selection criterion, as well as networking activities (...), capacity building, cooperation with representatives of scientific institutions, implementation of inter-territorial and transnational cooperation projects that enable the transfer and development of innovative ideas. Innovations include product, service innovation (creating a new, unprecedented product, service), process innovation (new, significantly different technological process or method of manufacturing or creating a service), resource innovations (operations fundamentally change the way resources are used), as well as social innovations (new forms of collaboration, new approaches or solutions to an existing social challenge), where initiatives in smart villages also play an important role, in particular by creating new forms of relationships and collaborations, including through digital solutions, thereby benefiting society and fostering its ability to act”.



Simplification



Use of Simplified Costs Options mentioned in all CAP Plans (except PT, LUX (for future modification) but not clear to what extent it will be done

MS mostly focus the tasks of LAGs on core functions (RO, GR, ES will delegate more functions to LAGs)

Advance payment – not always mentioned in the Plans but welcome (they may not require a guarantee under certain conditions)

and:

... and national implementation procedures? (outside the CAP Plan)

Act: timing and launch



Absorption is still fundamental in many regions and member states

Timely start: local action groups able to perform their functions within 12 months after the programme's approval – so still in 2023

Finalise the preparation of LDS, conduct selection process of LDS (incl consultation of the criteria by the CAP Monitoring Committee), and preparation of procedures/IT systems etc. – in 2023.



So younger, smarter, and simpler
LEADER in 2023-27?

.... It depends on **you**.

Keep in touch



ec.europa.eu/



europa.eu/



[@EU Commission](https://twitter.com/EU_Commission)



[@EuropeanCommission](https://www.facebook.com/EuropeanCommission)



[European Commission](https://www.linkedin.com/company/european-commission)



[europeancommission](https://www.instagram.com/europeancommission)



[@EuropeanCommission](https://www.youtube.com/@EuropeanCommission)



[EUTube](https://www.youtube.com/EUTube)



[EU Spotify](https://open.spotify.com/EU_Spotify)

Thank you



© European Union 2020

Unless otherwise noted the reuse of this presentation is authorised under the [CC BY 4.0](https://creativecommons.org/licenses/by/4.0/) license. For any use or reproduction of elements that are not owned by the EU, permission may need to be sought directly from the respective right holders.

Slide xx: [element concerned](#), source: [e.g. Fotolia.com](#); Slide xx: [element concerned](#), source: [e.g. iStock.com](#)

