



EU CAP Network Seminar 'Smart circular farming to address high energy and fertiliser prices'

6-7 December 2022
Porto| Portugal



Funded by
the European Union

SINCE-AFC

Stamatia Petridou





SinCE-AFC

Interreg Europe



European Union
European Regional
Development Fund

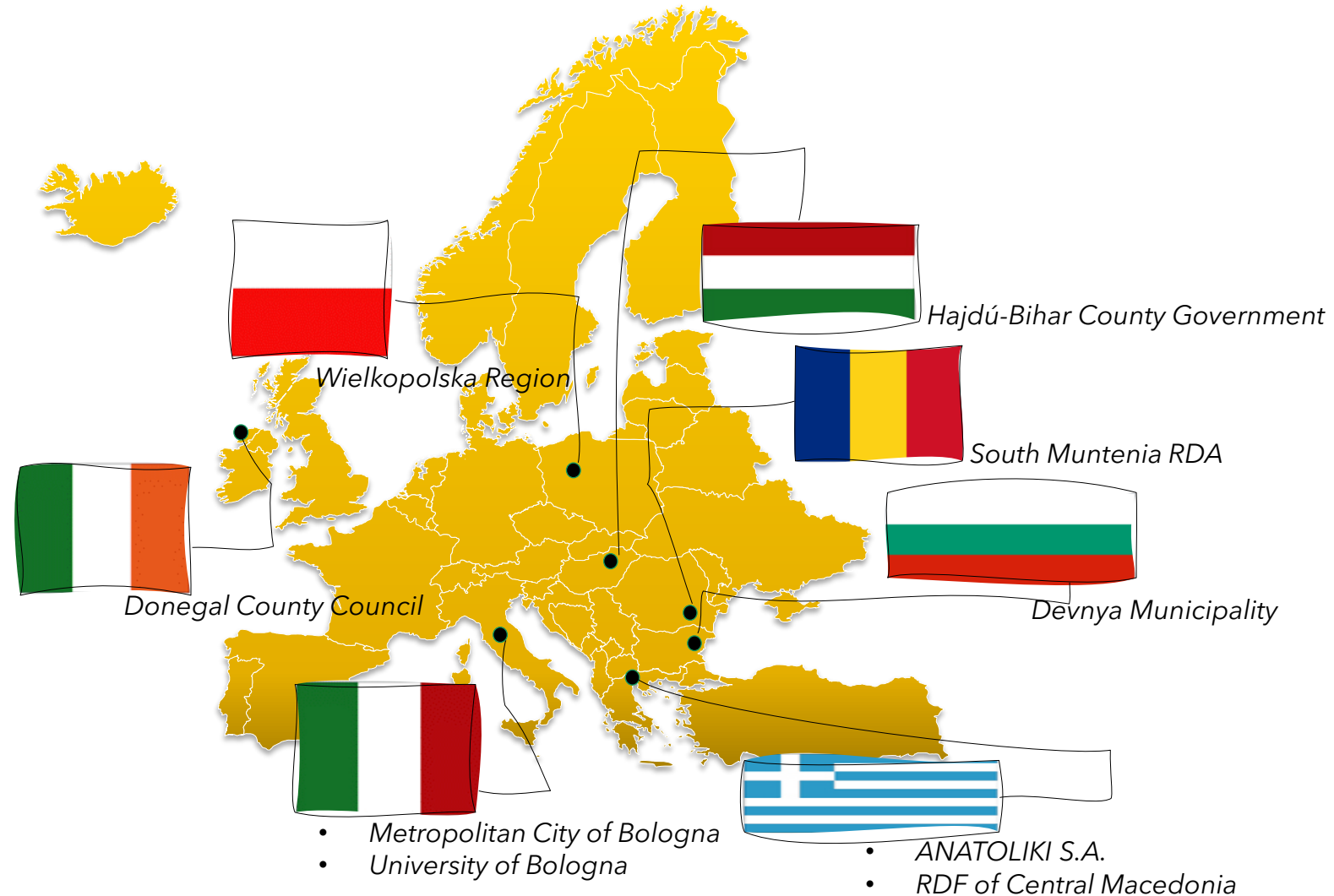
SINCE-AFC

Exploring the unlimited potential of Agrifood sector in Circular Economy

Stamatia Petridou
Agronomist

ANATOLIKI S.A., Greece

Project Partnership



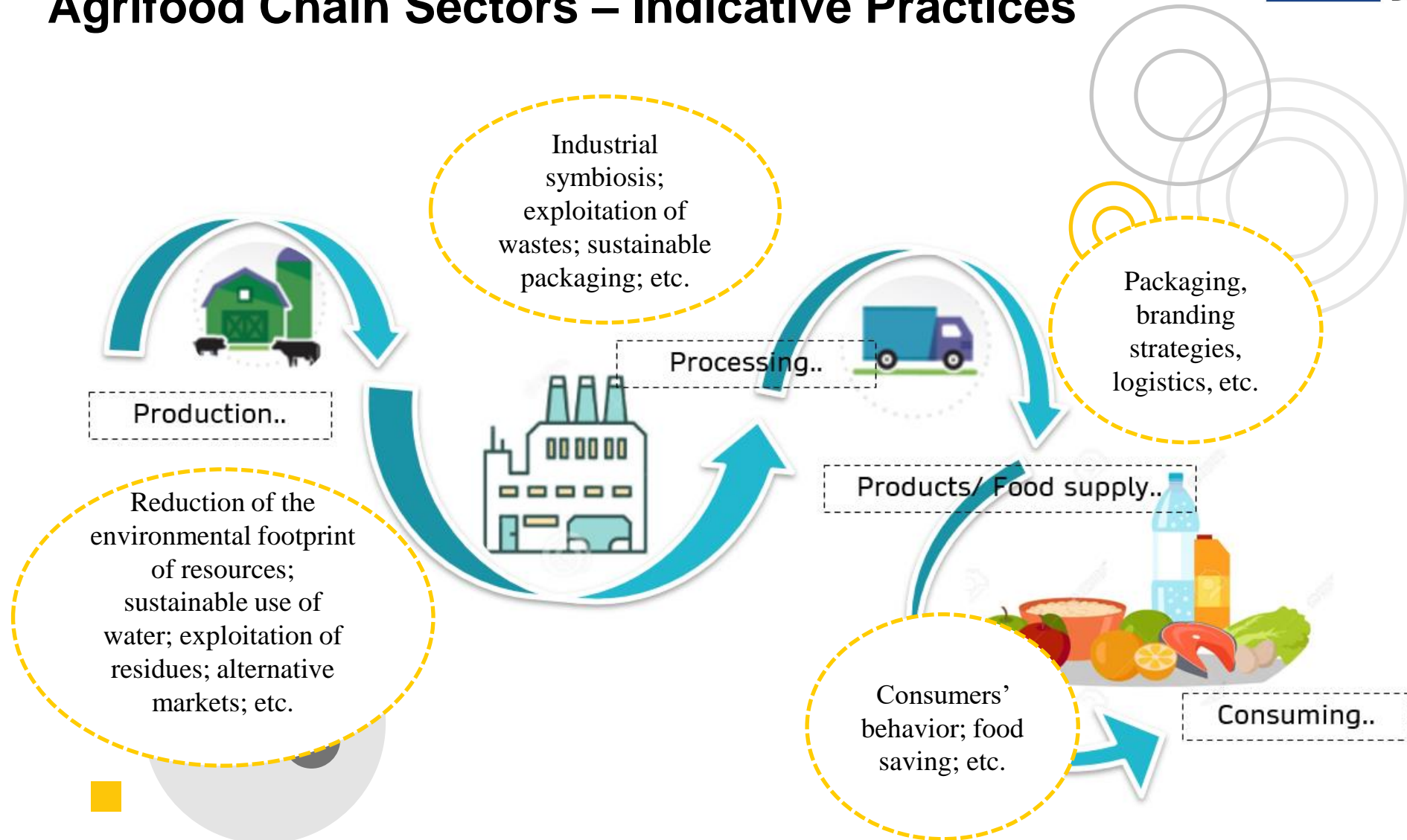
Project Aim



Improve policies in the field of regional innovation strategies
by facilitating horizontal mechanisms
that **support and enhance SMEs** entrepreneurship in
the **Agri-Food sector** through the exploitation of
Circular Economy opportunities.

Circular Economy focus

Agrifood Chain Sectors – Indicative Practices



Challenge

- *Unused potential of CE for growth and job creation*
- *Lack of motivation and support to SMEs in the CE sector*
- *Need for improvement of SMEs policies and supporting mechanisms*



Approach



- *Intensive interregional learning process*
- *Identification of good practices*
- *Design and set up of Action Plans*
- *Policy Change*



Exchanging the experience



Difficulties encountered



Main results stemming from SINCE-AFC Consultation Process

- Lack of knowledge and awareness about the CE concept and its benefits
- Lack of active engagement of businesses to further development of the CE sector
- The dominant established business system and the lack of common languages
- Lack of linkage between research and business



Drivers for increased impact

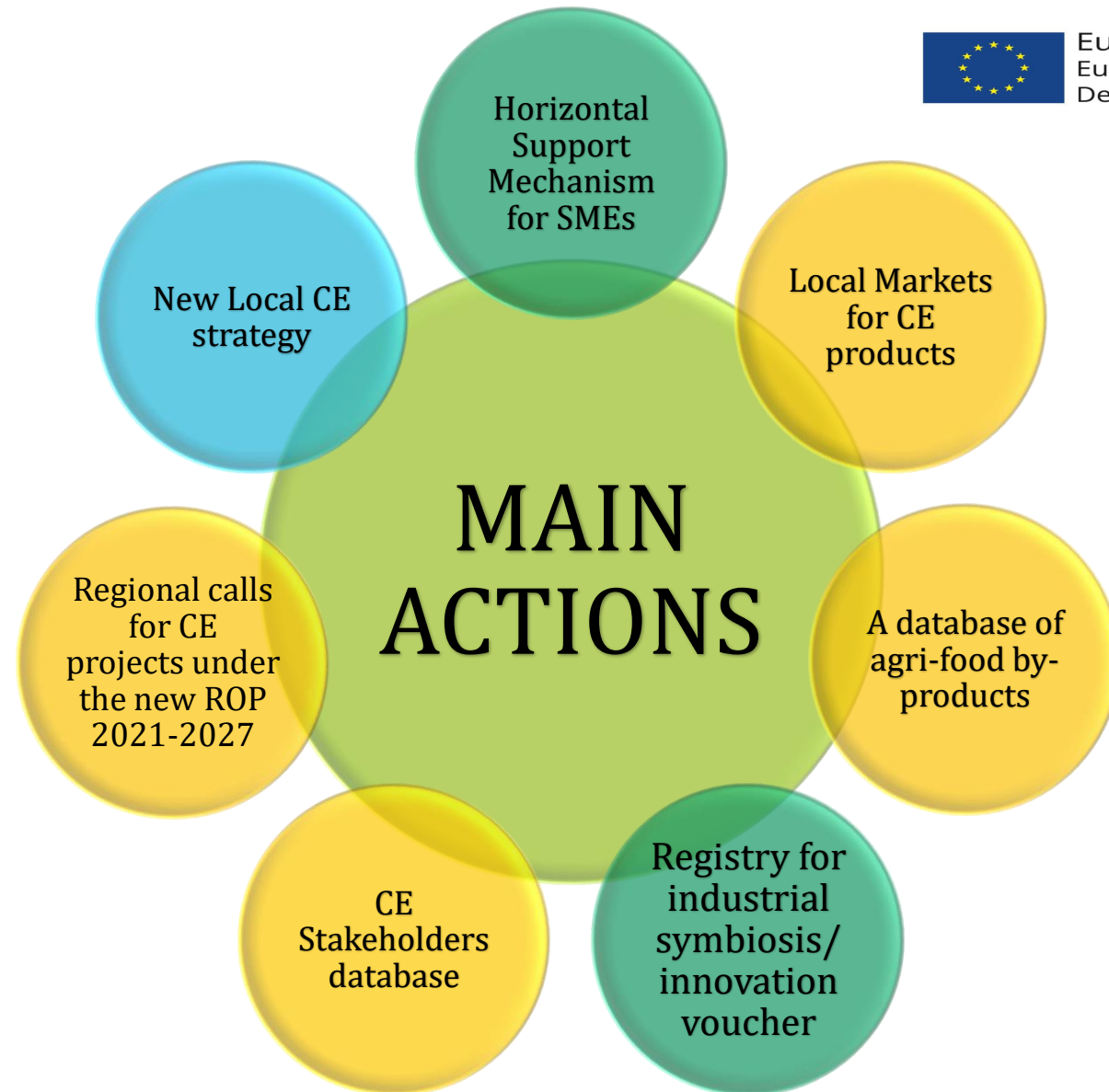
- CE campaigns for increasing the awareness and capacity
- Interregional knowledge exchange
- Development of collaborations at all levels
- Guidance of involved stakeholders and especially business
- Identification of business opportunities



ACTION PLANS

FEATURED Policy Changes

- New projects
- Structural change
- Improved governance



Expected Added Value

...for the partner regions in the Agri-Food sector



- Creation of Circular Economy horizontal supporting mechanisms
- More SMEs that make use of the new supporting mechanisms
- More SMEs involved in CE processes
- Improved waste management skills of SMEs
- New start-ups
- New initiatives to simplify the implementation of CE innovation activities



SinCE-AFC
Interreg Europe



European Union
European Regional
Development Fund

Thank you!

<https://www.interregeurope.eu/since-afc/>